

Cytokeratin 8 Recombinant Matched Antibody Pair, PBS Only

Catalog Number: MP02886-1

Capture Antibody Information

Catalog Number:

86457-4-PBS

Host:

Rabbit

Isotype:

IgG

Purification Method:

Protein A purification

Clone ID:

251045E11

Reactivity:

human

GenBank:

BC000654

Conjugate:

Unconjugated

Full name:

keratin 8

Gene ID:

3856

Detection Antibody Information

Catalog Number:

86457-8-PBS

Host:

Rabbit

Isotype:

IgG

Purification Method:

Protein A purification

Clone ID:

251045B1

Reactivity:

human

GenBank:

BC000654

Conjugate:

Unconjugated

Full name:

keratin 8

Gene ID:

3856

Applications

Tested Applications:

Sandwich ELISA

Range:

0.313-20 ng/mL (Sandwich ELISA)

Recommended Dilutions:

It is recommended that this reagent should be titrated in each testing system to obtain optimal results.

Product Information

MP02886-1 targets Cytokeratin 8 in immunoassays as a matched antibody pair. Validated in Sandwich ELISA.

Capture antibody: Cytokeratin 8 Recombinant monoclonal antibody, PBS Only (Capture) 86457-4-PBS (251045E11).
100 µg. Concentration 1 mg/mL.

Detection antibody: Cytokeratin 8 Recombinant monoclonal antibody, PBS Only (Detector) 86457-8-PBS (251045B1).
100 µg. Concentration 1 mg/mL.

Unconjugated rabbit recombinant monoclonal antibody pair in PBS only storage buffer at a concentration of 1 mg/mL, ready for conjugation. Created using Proteintech's proprietary in-house recombinant technology. Recombinant production enables unrivalled batch-to-batch consistency, easy scale-up, and future security of supply.

Matched antibody pairs are designed for use in a variety of assays and platforms that require matched antibody pairs.

Antibody use should be optimized for each application and assay.

Storage

Storage:

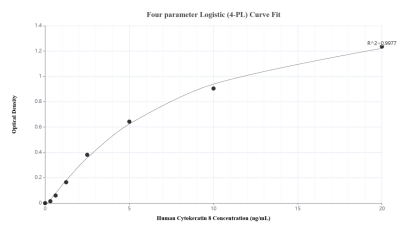
Store at -80°C.

The product is shipped with ice packs. Upon receipt, store it immediately at -80°C

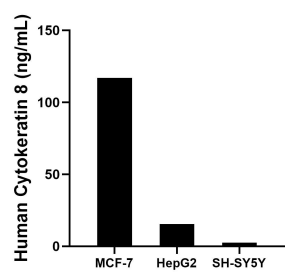
Storage buffer:

PBS only

Selected Validation Data



Sandwich ELISA standard curve of MP02886-1, Human Cytokeratin 8 Recombinant Matched Antibody Pair - PBS only. 86457-4-PBS was coated to a plate as the capture antibody and incubated with serial dilutions of standard SY02545. 86457-8-PBS was HRP conjugated as the detection antibody. Range: 0.313-20 ng/mL



The mean Cytokeratin 8 concentration was determined to be 116.99 ng/mL in MCF-7 cell extract based on a 1.20 mg/mL extract load, 15.41 ng/mL in HepG2 cell extract based on a 1.20 mg/mL extract load and 2.54 ng/mL in SH-SY5Y cell extract based on a 1.20 mg/mL extract load.