

For Research Use Only

# ENPP-2/Autotaxin Recombinant Matched Antibody Pair, PBS Only



Catalog Number:MP02884-1

## Capture Antibody Information

**Catalog Number:**  
82789-10-PBS  
**Host:**  
Rabbit  
**Isotype:**  
IgG  
**Purification Method:**  
Protein A purification

**Clone ID:**  
252235F1  
**Reactivity:**  
human  
**GenBank:**  
NM\_001040092.3  
**Immunogen Catalog Number:**  
Eg7267

**Conjugate:**  
Unconjugated  
**Full name:**  
ectonucleotide  
pyrophosphatase/phosphodiesterase  
2  
**Gene ID:**  
5168

## Detection Antibody Information

**Catalog Number:**  
82789-9-PBS  
**Host:**  
Rabbit  
**Isotype:**  
IgG  
**Purification Method:**  
Protein A purification

**Clone ID:**  
252235E11  
**Reactivity:**  
human  
**GenBank:**  
NM\_001040092.3  
**Immunogen Catalog Number:**  
Eg7267

**Conjugate:**  
Unconjugated  
**Full name:**  
ectonucleotide  
pyrophosphatase/phosphodiesterase  
2  
**Gene ID:**  
5168

## Applications

**Tested Applications:**  
Cytometric bead array, Sandwich  
ELISA

**Range:**  
0.312-40 ng/mL (Cytometric Bead  
Array)  
62.5-4000 pg/mL (Sandwich ELISA)

**Recommended Dilutions:**  
It is recommended that this reagent  
should be titrated in each testing  
system to obtain optimal results.

## Product Information

MP02884-1 targets ENPP-2/Autotaxin in immunoassays as a matched antibody pair. Validated in Cytometric bead array, Sandwich ELISA.

Capture antibody: ENPP-2/Autotaxin Recombinant monoclonal antibody, PBS Only (Capture) 82789-10-PBS (252235F1). 100  $\mu$ g. Concentration 1 mg/mL.

Detection antibody: ENPP-2/Autotaxin Recombinant monoclonal antibody, PBS Only (Detector) 82789-9-PBS (252235E11). 100  $\mu$ g. Concentration 1 mg/mL.

Unconjugated rabbit recombinant monoclonal antibody pair in PBS only storage buffer at a concentration of 1 mg/mL, ready for conjugation. Created using Proteintech's proprietary in-house recombinant technology. Recombinant production enables unrivalled batch-to-batch consistency, easy scale-up, and future security of supply.

Matched antibody pairs are designed for use in a variety of assays and platforms that require matched antibody pairs.

Antibody use should be optimized for each application and assay.

## Storage

**Storage:**  
Store at -80°C.  
**The product is shipped with ice packs. Upon receipt, store it immediately at -80°C**  
**Storage buffer:**  
PBS only

For technical support and original validation data for this product please contact:

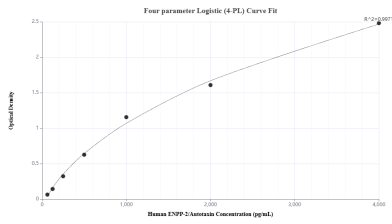
T: 4006900926

E: Proteintech-CN@ptglab.com

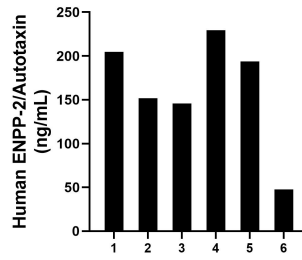
W: ptgcn.com

**This product is exclusively available under Proteintech Group brand and is not available to purchase from any other manufacturer.**

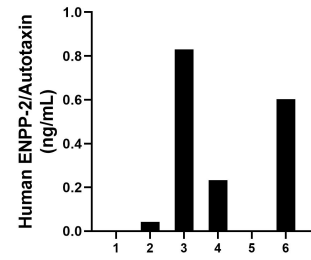
## Selected Validation Data



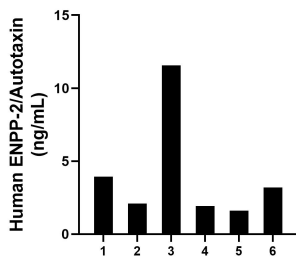
Sandwich ELISA standard curve of MP02884-1, Human ENPP-2/Autotaxin Recombinant Matched Antibody Pair - PBS only. 82789-10-PBS was coated to a plate as the capture antibody and incubated with serial dilutions of standard Eg7267. 82789-9-PBS was HRP conjugated as the detection antibody. Range: 362.5-4000 pg/mL



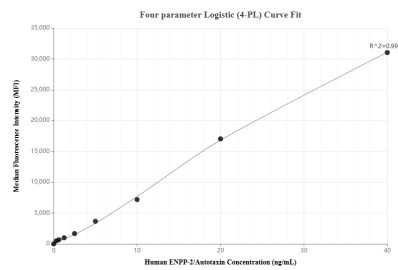
Plasma of six individual healthy human donors was measured. The human ENPP-2/Autotaxin concentration of detected samples was determined to be 162.15 ng/mL with a range of 47.54 - 229.51 ng/mL



Urine of six individual healthy human donors was measured. The human ENPP-2/Autotaxin concentration of detected samples was determined to be 0.43 ng/mL with a range of 0 - 0.83 ng/mL



Human milk of six individual healthy human donors was measured. The human ENPP-2/Autotaxin concentration of detected samples was determined to be 4.06 ng/mL with a range of 1.61 - 11.57 ng/mL



The mean ENPP-2/Autotaxin concentration was determined to be 325.7 ng/mL in human plasma.

Cytometric bead array standard curve of MP02884-1, ENPP-2/Autotaxin Recombinant Matched Antibody Pair, PBS Only. Capture antibody: 82789-10-PBS. Detection antibody: 82789-9-PBS. Standard: Eg7267. Range: 0.312-40 ng/mL