

For Research Use Only

CUBN Recombinant Matched Antibody Pair, PBS Only



Catalog Number:MP02876-1

Capture Antibody Information

Catalog Number:
87126-2-PBS
Host:
Rabbit
Isotype:
IgG
Purification Method:
Protein A purification

Clone ID:
252224C1
Reactivity:
human
GenBank:
NM_001081.4
Immunogen Catalog Number:
Eg6589

Conjugate:
Unconjugated
Full name:
cubilin (intrinsic factor-cobalamin receptor)
Gene ID:
8029

Detection Antibody Information

Catalog Number:
87126-1-PBS
Host:
Rabbit
Isotype:
IgG
Purification Method:
Protein A purification

Clone ID:
252224B7
Reactivity:
human
GenBank:
NM_001081.4
Immunogen Catalog Number:
Eg6589

Conjugate:
Unconjugated
Full name:
cubilin (intrinsic factor-cobalamin receptor)
Gene ID:
8029

Applications

Tested Applications:
Cytometric bead array

Range:
0.625-80 ng/mL (Cytometric Bead Array)

Recommended Dilutions:
It is recommended that this reagent should be titrated in each testing system to obtain optimal results.

Product Information

MP02876-1 targets CUBN in immunoassays as a matched antibody pair. Validated in Cytometric bead array.

Capture antibody: CUBN Recombinant monoclonal antibody, PBS Only (Capture) 87126-2-PBS (252224C1). 100 µg. Concentration 1 mg/mL.

Detection antibody: CUBN Recombinant monoclonal antibody, PBS Only (Detector) 87126-1-PBS (252224B7). 100 µg. Concentration 1 mg/mL.

Unconjugated rabbit recombinant monoclonal antibody pair in PBS only storage buffer at a concentration of 1 mg/mL, ready for conjugation. Created using Proteintech's proprietary in-house recombinant technology. Recombinant production enables unrivalled batch-to-batch consistency, easy scale-up, and future security of supply.

Matched antibody pairs are designed for use in a variety of assays and platforms that require matched antibody pairs.

Antibody use should be optimized for each application and assay.

Storage

Storage:
Store at -80°C.
The product is shipped with ice packs. Upon receipt, store it immediately at -80°C
Storage buffer:
PBS only

For technical support and original validation data for this product please contact:

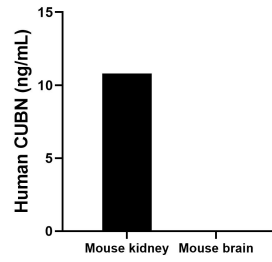
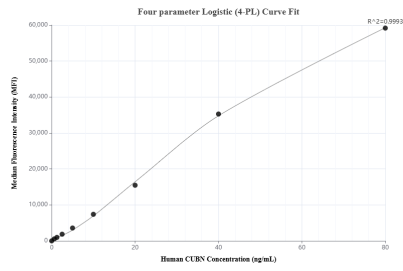
T: 4006900926

E: Proteintech-CN@ptglab.com

W: ptgcn.com

This product is exclusively available under Proteintech Group brand and is not available to purchase from any other manufacturer.

Selected Validation Data



Cytometric bead array standard curve of MP02876-1, CUBN Recombinant Matched Antibody Pair, PBS Only. Capture antibody: 87126-2-PBS. Detection antibody: 87126-1-PBS. Standard: Eg6589. Range: 0.625-80 ng/mL

The mean CUBN concentration was determined to be 10.8 ng/mL in Mouse kidney tissue extract based on a 8.4 mg/mL extract load. Mouse brain tissue extract were served as a negative control.