

For Research Use Only

P5CS Recombinant Matched Antibody Pair, PBS Only



Catalog Number:MP02872-1

Capture Antibody Information

Catalog Number:
87037-2-PBS
Host:
Rabbit
Isotype:
IgG
Purification Method:
Protein A purification

Clone ID:
252125C12
Reactivity:
human
GenBank:
BC106054
Immunogen Catalog Number:
Ag12100

Conjugate:
Unconjugated
Full name:
aldehyde dehydrogenase 18 family, member A1
Gene ID:
5832

Detection Antibody Information

Catalog Number:
87037-1-PBS
Host:
Rabbit
Isotype:
IgG
Purification Method:
Protein A purification

Clone ID:
252125B12
Reactivity:
human
GenBank:
BC106054
Immunogen Catalog Number:
Ag12100

Conjugate:
Unconjugated
Full name:
aldehyde dehydrogenase 18 family, member A1
Gene ID:
5832

Applications

Tested Applications:
Sandwich ELISA

Range:
7.81-500 ng/mL (Sandwich ELISA)

Recommended Dilutions:
It is recommended that this reagent should be titrated in each testing system to obtain optimal results.

Product Information

MP02872-1 targets P5CS in immunoassays as a matched antibody pair. Validated in Sandwich ELISA.

Capture antibody: ALDH18A1 Recombinant monoclonal antibody, PBS Only (Capture) 87037-2-PBS (252125C12). 100 µg. Concentration 1 mg/mL.

Detection antibody: ALDH18A1 Recombinant monoclonal antibody, PBS Only (Detector) 87037-1-PBS (252125B12). 100 µg. Concentration 1 mg/mL.

Unconjugated rabbit recombinant monoclonal antibody pair in PBS only storage buffer at a concentration of 1 mg/mL, ready for conjugation. Created using Proteintech's proprietary in-house recombinant technology. Recombinant production enables unrivalled batch-to-batch consistency, easy scale-up, and future security of supply.

Matched antibody pairs are designed for use in a variety of assays and platforms that require matched antibody pairs.

Antibody use should be optimized for each application and assay.

Storage

Storage:
Store at -80°C.
The product is shipped with ice packs. Upon receipt, store it immediately at -80°C
Storage buffer:
PBS only

For technical support and original validation data for this product please contact:

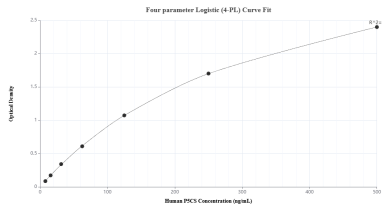
T: 4006900926

E: Proteintech-CN@ptglab.com

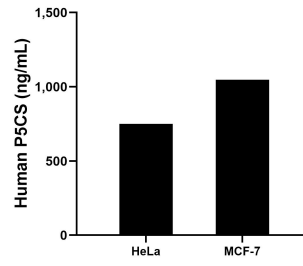
W: ptgcn.com

This product is exclusively available under Proteintech Group brand and is not available to purchase from any other manufacturer.

Selected Validation Data



Sandwich ELISA standard curve of MP02872-1, Human GNAS Recombinant Matched Antibody Pair - PBS only. 87037-2-PBS was coated to a plate as the capture antibody and incubated with serial dilutions of standard Ag12100. 87037-1-PBS was HRP conjugated as the detection antibody. Range: 7.81-500 ng/mL



The mean P5CS concentration was determined to be 749.95 ng/mL in HeLa cell extract based on a 1.2 mg/mL extract load and 1,046.66 ng/mL in MCF-7 cell extract based on a 1.2 mg/mL extract load.