

For Research Use Only

KAT6B/MORF Recombinant Matched Antibody Pair, PBS Only



Catalog Number:MP02869-2

Capture Antibody Information

Catalog Number:
86962-11-PBS

Host:
Rabbit

Isotype:
IgG

Purification Method:
Protein A purification

Clone ID:
253286E11

Reactivity:
human

GenBank:
BC150618

Conjugate:
Unconjugated

Full name:
MYST histone acetyltransferase
(monocytic leukemia) 4

Gene ID:
23522

Detection Antibody Information

Catalog Number:
86962-10-PBS

Host:
Rabbit

Isotype:
IgG

Purification Method:
Protein A purification

Clone ID:
253286C7

Reactivity:
human

GenBank:
BC150618

Conjugate:
Unconjugated

Full name:
MYST histone acetyltransferase
(monocytic leukemia) 4

Gene ID:
23522

Applications

Tested Applications:
Sandwich ELISA

Range:
39.1-2500 pg/mL (Sandwich ELISA)

Recommended Dilutions:
It is recommended that this reagent should be titrated in each testing system to obtain optimal results.

Product Information

MP02869-2 targets KAT6B/MORF in immunoassays as a matched antibody pair. Validated in Sandwich ELISA.

Capture antibody: MYST4 Recombinant monoclonal antibody, PBS Only (Capture) 86962-11-PBS (253286E11). 100 μ g. Concentration 1 mg/mL.

Detection antibody: MYST4 Recombinant monoclonal antibody, PBS Only (Detector) 86962-10-PBS (253286C7). 100 μ g. Concentration 1 mg/mL.

Unconjugated rabbit recombinant monoclonal antibody pair in PBS only storage buffer at a concentration of 1 mg/mL, ready for conjugation. Created using Proteintech's proprietary in-house recombinant technology. Recombinant production enables unrivalled batch-to-batch consistency, easy scale-up, and future security of supply.

Matched antibody pairs are designed for use in a variety of assays and platforms that require matched antibody pairs.

Antibody use should be optimized for each application and assay.

Storage

Storage:
Store at -80°C.

The product is shipped with ice packs. Upon receipt, store it immediately at -80°C

Storage buffer:
PBS only

For technical support and original validation data for this product please contact:

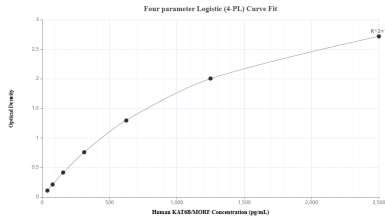
T: 4006900926

E: Proteintech-CN@ptglab.com

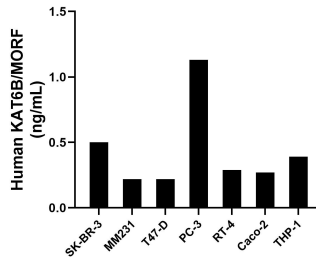
W: ptgcn.com

This product is exclusively available under Proteintech Group brand and is not available to purchase from any other manufacturer.

Selected Validation Data



Sandwich ELISA standard curve of MP02869-2, Human KAT6B/MORF Recombinant Matched Antibody Pair - PBS only. 86962-11-PBS was coated to a plate as the capture antibody and incubated with serial dilutions of standard SY03010. 86962-10-PBS was HRP conjugated as the detection antibody. Range: 39.1-2500 pg/mL



The mean KAT6B/MORF concentration was determined to be 0.51 ng/mL in SK-BR-3 cell extract based on a 1.2 mg/mL extract load, 0.22 ng/mL in MM231 cell extract based on a 1.2 mg/mL extract load, 0.22 ng/mL in T47-D cell extract based on a 1.2 mg/mL extract load, 1.13 ng/mL in PC-3 cell extract based on a 1.5 mg/mL extract load, 0.29 ng/mL in RT-4 cell extract based on a 1.5 mg/mL extract load, 0.27 ng/mL in CaCO-2 cell extract based on a 1.2 mg/mL extract load and 0.39 ng/mL in