

For Research Use Only

KAT6B/MORF Recombinant Matched Antibody Pair, PBS Only



Catalog Number:MP02869-1

Capture Antibody Information

Catalog Number:
86962-8-PBS
Host:
Rabbit
Isotype:
IgG
Purification Method:
Protein A purification

Clone ID:
251928G7
Reactivity:
human
GenBank:
BC150618
Immunogen Catalog Number:
Ag29842

Conjugate:
Unconjugated
Full name:
MYST histone acetyltransferase (monocytic leukemia) 4
Gene ID:
23522

Detection Antibody Information

Catalog Number:
86962-7-PBS
Host:
Rabbit
Isotype:
IgG
Purification Method:
Protein A purification

Clone ID:
251928C12
Reactivity:
human
GenBank:
BC150618
Immunogen Catalog Number:
Ag29842

Conjugate:
Unconjugated
Full name:
MYST histone acetyltransferase (monocytic leukemia) 4
Gene ID:
23522

Applications

Tested Applications:
Sandwich ELISA

Range:
0.391-25 ng/mL (Sandwich ELISA)

Recommended Dilutions:
It is recommended that this reagent should be titrated in each testing system to obtain optimal results.

Product Information

MP02869-1 targets KAT6B/MORF in immunoassays as a matched antibody pair. Validated in Sandwich ELISA.

Capture antibody: KAT6B/MORF Recombinant monoclonal antibody, PBS Only (Capture) 86962-8-PBS (251928G7). 100 µg. Concentration 1 mg/mL.

Detection antibody: KAT6B/MORF Recombinant monoclonal antibody, PBS Only (Detector) 86962-7-PBS (251928C12). 100 µg. Concentration 1 mg/mL.

Unconjugated rabbit recombinant monoclonal antibody pair in PBS only storage buffer at a concentration of 1 mg/mL, ready for conjugation. Created using Proteintech's proprietary in-house recombinant technology. Recombinant production enables unrivalled batch-to-batch consistency, easy scale-up, and future security of supply.

Matched antibody pairs are designed for use in a variety of assays and platforms that require matched antibody pairs.

Antibody use should be optimized for each application and assay.

Storage

Storage:
Store at -80°C.
The product is shipped with ice packs. Upon receipt, store it immediately at -80°C
Storage buffer:
PBS only

For technical support and original validation data for this product please contact:

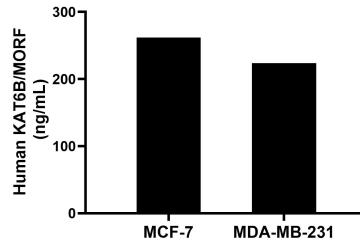
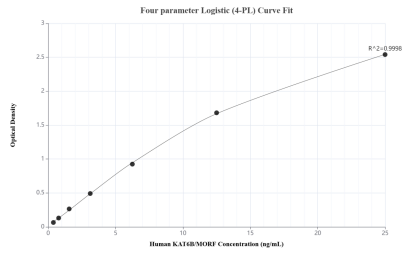
T: 4006900926

E: Proteintech-CN@ptglab.com

W: ptgcn.com

This product is exclusively available under Proteintech Group brand and is not available to purchase from any other manufacturer.

Selected Validation Data



Sandwich ELISA standard curve of MP02869-1, Human KAT6B/MORF Recombinant Matched Antibody Pair - PBS only. 86962-8-PBS was coated to a plate as the capture antibody and incubated with serial dilutions of standard Ag29842. 86962-7-PBS was HRP conjugated as the detection antibody. Range: 0.391-25 ng/mL

The mean KAT6B/MORF concentration was determined to be 261.93 ng/mL in MCF-7 cell extract based on a 1.20 mg/mL extract load and 224.0 ng/mL in MDA-MB-231 cell extract based on a 1.20 mg/mL extract load.