

For Research Use Only

# Apolipoprotein CIII Recombinant Matched Antibody Pair, PBS Only



Catalog Number:MP02866-2

## Capture Antibody Information

**Catalog Number:**  
87100-4-PBS  
**Host:**  
Rabbit  
**Isotype:**  
IgG  
**Purification Method:**  
Protein A purification

**Clone ID:**  
252153A1  
**Reactivity:**  
human  
**GenBank:**  
NM\_000040  
**Immunogen Catalog Number:**  
Eg3387

**Conjugate:**  
Unconjugated  
**Full name:**  
apolipoprotein C-III  
**Gene ID:**  
345

## Detection Antibody Information

**Catalog Number:**  
87100-2-PBS  
**Host:**  
Rabbit  
**Isotype:**  
IgG  
**Purification Method:**  
Protein A purification

**Clone ID:**  
252153D2  
**Reactivity:**  
human  
**GenBank:**  
NM\_000040  
**Immunogen Catalog Number:**  
Eg3387

**Conjugate:**  
Unconjugated  
**Full name:**  
apolipoprotein C-III  
**Gene ID:**  
345

## Applications

**Tested Applications:**  
Sandwich ELISA

**Range:**  
78.1-5000 pg/mL (Sandwich ELISA)

**Recommended Dilutions:**  
It is recommended that this reagent should be titrated in each testing system to obtain optimal results.

## Product Information

MP02866-2 targets Apolipoprotein CIII in immunoassays as a matched antibody pair. Validated in Sandwich ELISA.

Capture antibody: Apolipoprotein CIII Recombinant monoclonal antibody, PBS Only (Capture) 87100-4-PBS (252153A1). 100 µg. Concentration 1 mg/mL.

Detection antibody: Apolipoprotein CIII Recombinant monoclonal antibody, PBS Only (Detector) 87100-2-PBS (252153D2). 100 µg. Concentration 1 mg/mL.

Unconjugated rabbit recombinant monoclonal antibody pair in PBS only storage buffer at a concentration of 1 mg/mL, ready for conjugation. Created using Proteintech's proprietary in-house recombinant technology. Recombinant production enables unrivalled batch-to-batch consistency, easy scale-up, and future security of supply.

Matched antibody pairs are designed for use in a variety of assays and platforms that require matched antibody pairs.

Antibody use should be optimized for each application and assay.

## Storage

**Storage:**  
Store at -80°C.  
**The product is shipped with ice packs. Upon receipt, store it immediately at -80°C**  
**Storage buffer:**  
PBS only

For technical support and original validation data for this product please contact:

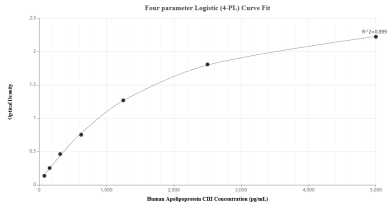
T: 4006900926

E: Proteintech-CN@ptgcn.com

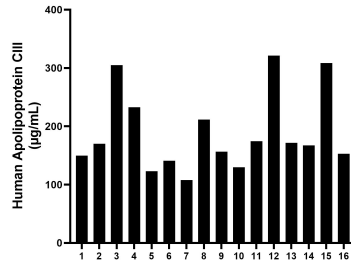
W: ptgcn.com

**This product is exclusively available under Proteintech Group brand and is not available to purchase from any other manufacturer.**

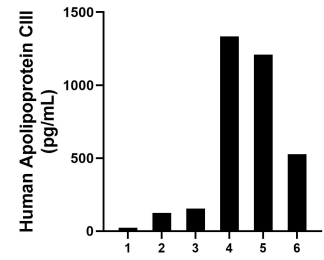
## Selected Validation Data



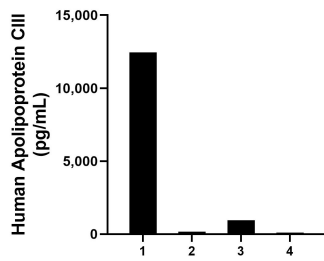
Sandwich ELISA standard curve of MP02866-2, Human Apolipoprotein CIII Recombinant Matched Antibody Pair - PBS only. 87100-4-PBS was coated to a plate as the capture antibody and incubated with serial dilutions of standard Eg3387. 87100-2-PBS was HRP conjugated as the detection antibody. Range: 78.1-5000 µg/mL



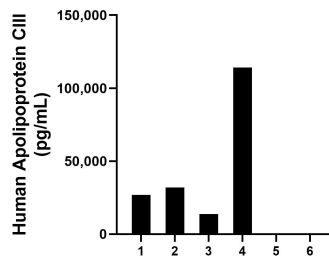
Plasma of sixteen individual healthy human donors was measured. The human Apolipoprotein CIII concentration of detected samples was determined to be 188.92 µg/mL with a range of 107.97 - 321.24 µg/mL.



Saliva of six individual healthy human donors was measured. The human Apolipoprotein CIII concentration of detected samples was determined to be 561.9 pg/mL with a range of 23.1 - 1,334.8 pg/mL.



Urine of four individual healthy human donors was measured. The human Apolipoprotein CIII concentration of detected samples was determined to be 3,416.1 pg/mL with a range of 110.3 - 12,438.9 pg/mL.



Human milk of six individual healthy human donors was measured. The human Apolipoprotein CIII concentration of detected samples was determined to be 31,160.2 pg/mL with a range of 16.6 - 114,116.5 pg/mL.