

CD21 Recombinant Matched Antibody Pair, PBS Only

Catalog Number: MP02864-1

Capture Antibody Information

Catalog Number:
87097-3-PBS
Host:
Rabbit
Isotype:
IgG
Purification Method:
Protein A purification

Clone ID:
252181G8
Reactivity:
human
GenBank:
NM_001877.5
Immunogen Catalog Number:
Eg2980

Conjugate:
Unconjugated
Full name:
complement component (3d/Epstein Barr virus) receptor 2
Gene ID:
1380

Detection Antibody Information

Catalog Number:
87097-2-PBS
Host:
Rabbit
Isotype:
IgG
Purification Method:
Protein A purification

Clone ID:
252181B3
Reactivity:
human
GenBank:
NM_001877.5
Immunogen Catalog Number:
Eg2980

Conjugate:
Unconjugated
Full name:
complement component (3d/Epstein Barr virus) receptor 2
Gene ID:
1380

Applications

Tested Applications:
Cytometric bead array

Range:
0.938-60 ng/mL (Cytometric Bead Array)

Recommended Dilutions:
It is recommended that this reagent should be titrated in each testing system to obtain optimal results.

Product Information

MP02864-1 targets CD21 in immunoassays as a matched antibody pair. Validated in Cytometric bead array.

Capture antibody: CR2 Recombinant monoclonal antibody, PBS Only (Capture) 87097-3-PBS (252181G8). 100 µg. Concentration 1 mg/mL.

Detection antibody: CR2 Recombinant monoclonal antibody, PBS Only (Detector) 87097-2-PBS (252181B3). 100 µg. Concentration 1 mg/mL.

Unconjugated rabbit recombinant monoclonal antibody pair in PBS only storage buffer at a concentration of 1 mg/mL, ready for conjugation. Created using Proteintech's proprietary in-house recombinant technology. Recombinant production enables unrivalled batch-to-batch consistency, easy scale-up, and future security of supply.

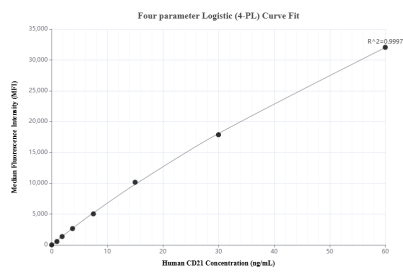
Matched antibody pairs are designed for use in a variety of assays and platforms that require matched antibody pairs.

Antibody use should be optimized for each application and assay.

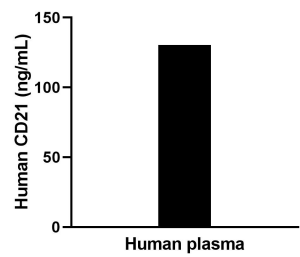
Storage

Storage:
Store at -80°C.
The product is shipped with ice packs. Upon receipt, store it immediately at -80°C
Storage buffer:
PBS only

Selected Validation Data



Cytometric bead array standard curve of MP02864-1, CD21 Recombinant Matched Antibody Pair, PBS Only. Capture antibody: 87097-3-PBS. Detection antibody: 87097-2-PBS. Standard: Eg2980. Range: 0.938-60 ng/mL



The mean CD21 concentration was determined to be 131.8 ng/mL in human plasma.