

For Research Use Only

MRE11 Recombinant Matched Antibody Pair, PBS Only



Catalog Number:MP02855-1

Capture Antibody Information

Catalog Number:
87066-2-PBS
Host:
Rabbit
Isotype:
IgG
Purification Method:
Protein A purification

Clone ID:
252144C9
Reactivity:
human
GenBank:
BC005241
Immunogen Catalog Number:
Ag1105

Conjugate:
Unconjugated
Full name:
MRE11 meiotic recombination 11 homolog A (S. cerevisiae)
Gene ID:
4361

Detection Antibody Information

Catalog Number:
87066-1-PBS
Host:
Rabbit
Isotype:
IgG
Purification Method:
Protein A purification

Clone ID:
252144G3
Reactivity:
human
GenBank:
BC005241
Immunogen Catalog Number:
Ag1105

Conjugate:
Unconjugated
Full name:
MRE11 meiotic recombination 11 homolog A (S. cerevisiae)
Gene ID:
4361

Applications

Tested Applications:
Cytometric bead array

Range:
0.625-80 ng/mL (Cytometric Bead Array)

Recommended Dilutions:
It is recommended that this reagent should be titrated in each testing system to obtain optimal results.

Product Information

MP02855-1 targets MRE11 in immunoassays as a matched antibody pair. Validated in Cytometric bead array.

Capture antibody: MRE11A Recombinant monoclonal antibody, PBS Only (Capture) 87066-2-PBS (252144C9). 100 µg. Concentration 1 mg/mL.

Detection antibody: MRE11A Recombinant monoclonal antibody, PBS Only (Detector) 87066-1-PBS (252144G3). 100 µg. Concentration 1 mg/mL.

Unconjugated rabbit recombinant monoclonal antibody pair in PBS only storage buffer at a concentration of 1 mg/mL, ready for conjugation. Created using Proteintech's proprietary in-house recombinant technology. Recombinant production enables unrivalled batch-to-batch consistency, easy scale-up, and future security of supply.

Matched antibody pairs are designed for use in a variety of assays and platforms that require matched antibody pairs.

Antibody use should be optimized for each application and assay.

Storage

Storage:
Store at -80°C.
The product is shipped with ice packs. Upon receipt, store it immediately at -80°C
Storage buffer:
PBS only

For technical support and original validation data for this product please contact:

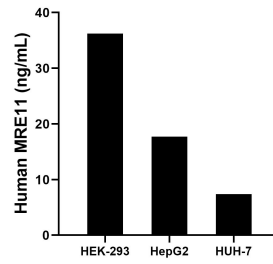
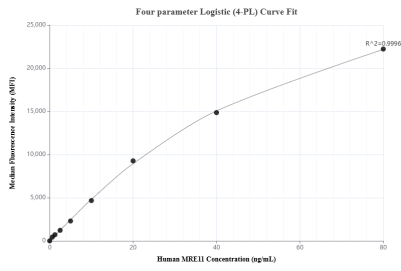
T: 4006900926

E: Proteintech-CN@ptglab.com

W: ptgcn.com

This product is exclusively available under Proteintech Group brand and is not available to purchase from any other manufacturer.

Selected Validation Data



Cytometric bead array standard curve of MPO2855-1, MRE11 Recombinant Matched Antibody Pair, PBS Only. Capture antibody: 87066-2-PBS. Detection antibody: 87066-1-PBS. Standard: Ag1105. Range: 0.625-80 ng/mL

The mean MRE11 concentration was determined to be 36.2 ng/mL in HEK-293 cell extract based on a 1.2 mg/mL extract load, 17.7 ng/mL in HepG2 cell extract based on a 1.2 mg/mL extract load, 7.4 ng/mL in HUH-7 cell extract based on a 1.2 mg/mL extract load.