

# Integrin alpha 1 Recombinant Matched Antibody Pair, PBS Only

Catalog Number: **MP02854-2**

## Capture Antibody Information

**Catalog Number:**  
87056-2-PBS  
**Host:**  
Rabbit  
**Isotype:**  
IgG  
**Purification Method:**  
Protein A purification

**Clone ID:**  
251984B7  
**Reactivity:**  
human  
**GenBank:**  
BC137121  
**Immunogen Catalog Number:**  
Eg2089

**Conjugate:**  
Unconjugated  
**Full name:**  
integrin, alpha 1  
**Gene ID:**  
3672

## Detection Antibody Information

**Catalog Number:**  
87056-4-PBS  
**Host:**  
Rabbit  
**Isotype:**  
IgG  
**Purification Method:**  
Protein A purification

**Clone ID:**  
251984B10  
**Reactivity:**  
human  
**GenBank:**  
BC137121  
**Immunogen Catalog Number:**  
Eg2089

**Conjugate:**  
Unconjugated  
**Full name:**  
integrin, alpha 1  
**Gene ID:**  
3672

## Applications

**Tested Applications:**  
Sandwich ELISA

**Range:**  
0.313-20 ng/mL (Sandwich ELISA)

**Recommended Dilutions:**  
It is recommended that this reagent should be titrated in each testing system to obtain optimal results.

## Product Information

MP02854-2 targets Integrin alpha 1 in immunoassays as a matched antibody pair. Validated in Sandwich ELISA.

Capture antibody: Integrin alpha-1 Recombinant monoclonal antibody, PBS Only (Capture) 87056-2-PBS (251984B7). 100 µg. Concentration 1 mg/mL.

Detection antibody: Integrin alpha-1 Recombinant monoclonal antibody, PBS Only (Detector) 87056-4-PBS (251984B10). 100 µg. Concentration 1 mg/mL.

Unconjugated rabbit recombinant monoclonal antibody pair in PBS only storage buffer at a concentration of 1 mg/mL, ready for conjugation. Created using Proteintech's proprietary in-house recombinant technology. Recombinant production enables unrivalled batch-to-batch consistency, easy scale-up, and future security of supply.

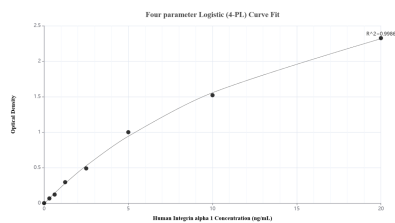
Matched antibody pairs are designed for use in a variety of assays and platforms that require matched antibody pairs.

Antibody use should be optimized for each application and assay.

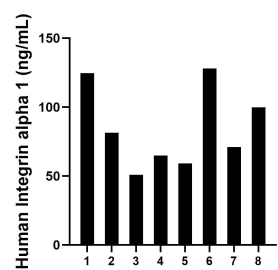
## Storage

**Storage:**  
Store at -80°C.  
**The product is shipped with ice packs. Upon receipt, store it immediately at -80°C**  
**Storage buffer:**  
PBS only

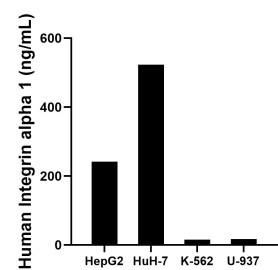
## Selected Validation Data



Sandwich ELISA standard curve of MP02854-2, Human Integrin alpha 1 Recombinant Matched Antibody Pair - PBS only. 87056-2-PBS was coated to a plate as the capture antibody and incubated with serial dilutions of standard Eg2089. 87056-4-PBS was HRP conjugated as the detection antibody. Range: 0.313-20 ng/mL



Plasma of eight individual healthy human donors was measured. The Integrin alpha 1 concentration of detected samples was determined to be 84.94 ng/mL with a range of 50.93-128.02 ng/mL



The mean Integrin alpha 1 concentration was determined to be 241.89 ng/mL in HepG2 cell extract based on a 1.20 mg/mL extract load, 523.16 ng/mL in HuH-7 cell extract based on a 1.20 mg/mL extract load, 15.42 ng/mL in K-562 cell extract based on a 1.20 mg/mL extract load and 17.42 ng/mL in U-937 cell extract based on a 1.20 mg/mL extract load.