

For Research Use Only

SMAD3 Recombinant Matched Antibody Pair, PBS Only



Catalog Number:MP02853-2

Capture Antibody Information

Catalog Number:
87035-4-PBS

Host:
Rabbit

Isotype:
IgG

Purification Method:
Protein A purification

Clone ID:
251981E7

Reactivity:
human

GenBank:
NM_005902

Immunogen Catalog Number:
Ag32623

Conjugate:
Unconjugated

Full name:
SMAD family member 3

Gene ID:
4088

Detection Antibody Information

Catalog Number:
87035-1-PBS

Host:
Rabbit

Isotype:
IgG

Purification Method:
Protein A purification

Clone ID:
251981H8

Reactivity:
human, mouse, rat

GenBank:
NM_005902

Immunogen Catalog Number:
Ag32623

Conjugate:
Unconjugated

Full name:
SMAD family member 3

Gene ID:
4088

Applications

Tested Applications:
Sandwich ELISA

Range:
46.9-3000 pg/mL (Sandwich ELISA)

Recommended Dilutions:
It is recommended that this reagent should be titrated in each testing system to obtain optimal results.

Product Information

MP02853-2 targets SMAD3 in immunoassays as a matched antibody pair. Validated in Sandwich ELISA.

Capture antibody: SMAD3 Recombinant monoclonal antibody, PBS Only (Capture) 87035-4-PBS (251981E7). 100 μ g. Concentration 1 mg/mL.

Detection antibody: SMAD3 Recombinant monoclonal antibody, PBS Only (Detector) 87035-1-PBS (251981H8). 100 μ g. Concentration 1 mg/mL.

Unconjugated rabbit recombinant monoclonal antibody pair in PBS only storage buffer at a concentration of 1 mg/mL, ready for conjugation. Created using Proteintech's proprietary in-house recombinant technology. Recombinant production enables unrivalled batch-to-batch consistency, easy scale-up, and future security of supply.

Matched antibody pairs are designed for use in a variety of assays and platforms that require matched antibody pairs.

Antibody use should be optimized for each application and assay.

Storage

Storage:

Store at -80°C.

The product is shipped with ice packs. Upon receipt, store it immediately at -80°C

Storage buffer:

PBS only

For technical support and original validation data for this product please contact:

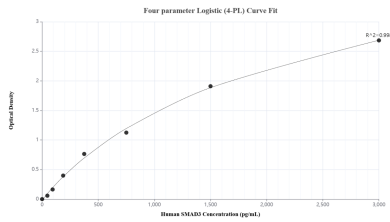
T: 4006900926

E: Proteintech-CN@ptglab.com

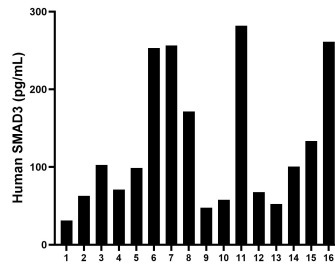
W: ptgcn.com

This product is exclusively available under Proteintech Group brand and is not available to purchase from any other manufacturer.

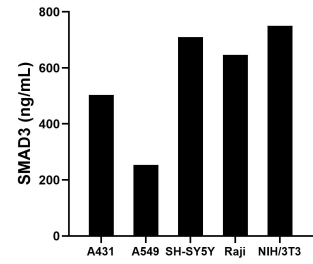
Selected Validation Data



Sandwich ELISA standard curve of MP02853-2, Human SMAD3 Recombinant Matched Antibody Pair - PBS only. 87035-4-PBS was coated to a plate as the capture antibody and incubated with serial dilutions of standard Ag32623. 87035-1-PBS was HRP conjugated as the detection antibody. Range: 46.9-3000 pg/mL



Serum of sixteen individual healthy human donors was measured. The SMAD3 concentration of detected samples was determined to be 128.2 pg/mL with a range of 31.3-281.8 pg/mL



The mean SMAD3 concentration was determined to be 503.2 ng/mL in A431 cell extract based on a 1.2 mg/mL extract load, 253.4 ng/mL in A549 cell extract based on a 1.2 mg/mL extract load, 709.6 ng/mL in SH-SY5Y cell extract based on a 1.2 mg/mL extract load, 646.7 ng/mL in Raji cell extract based on a 1.2 mg/mL extract load and 750.4 ng/mL in NIH/3T3 cell extract based on a 1.2 mg/mL extract load.