

SOX10 Recombinant Matched Antibody Pair, PBS Only

Catalog Number: **MP02850-2**

Capture Antibody Information

Catalog Number:
87051-3-PBS
Host:
Rabbit
Isotype:
IgG
Purification Method:
Protein A purification

Clone ID:
252024E10
Reactivity:
human, rat
GenBank:
BC002824
Immunogen Catalog Number:
Ag38090

Conjugate:
Unconjugated
Full name:
SRY (sex determining region Y)-box 10
Gene ID:
6663

Detection Antibody Information

Catalog Number:
87051-4-PBS
Host:
Rabbit
Isotype:
IgG
Purification Method:
Protein A purification

Clone ID:
252024A6
Reactivity:
human
GenBank:
BC002824
Immunogen Catalog Number:
Ag38090

Conjugate:
Unconjugated
Full name:
SRY (sex determining region Y)-box 10
Gene ID:
6663

Applications

Tested Applications:
Sandwich ELISA

Range:
31.3-1000 pg/mL (Sandwich ELISA)

Recommended Dilutions:
It is recommended that this reagent should be titrated in each testing system to obtain optimal results.

Product Information

MP02850-2 targets SOX10 in immunoassays as a matched antibody pair. Validated in Sandwich ELISA.

Capture antibody: SOX10 Recombinant monoclonal antibody, PBS Only (Capture) 87051-3-PBS (252024E10). 100 µg. Concentration 1 mg/mL.

Detection antibody: SOX10 Recombinant monoclonal antibody, PBS Only (Detector) 87051-4-PBS (252024A6). 100 µg. Concentration 1 mg/mL.

Unconjugated rabbit recombinant monoclonal antibody pair in PBS only storage buffer at a concentration of 1 mg/mL, ready for conjugation. Created using Proteintech's proprietary in-house recombinant technology. Recombinant production enables unrivalled batch-to-batch consistency, easy scale-up, and future security of supply.

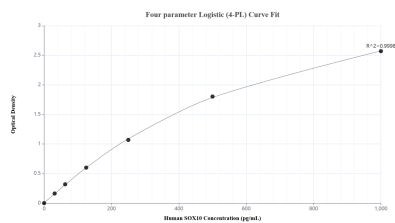
Matched antibody pairs are designed for use in a variety of assays and platforms that require matched antibody pairs.

Antibody use should be optimized for each application and assay.

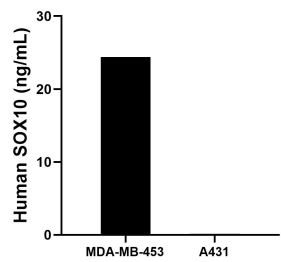
Storage

Storage:
Store at -80°C.
The product is shipped with ice packs. Upon receipt, store it immediately at -80°C
Storage buffer:
PBS only

Selected Validation Data



Sandwich ELISA standard curve of MP02850-2, Human SOX10 Recombinant Matched Antibody Pair - PBS only. 87051-3-PBS was coated to a plate as the capture antibody and incubated with serial dilutions of standard Ag38090. 87051-4-PBS was HRP conjugated as the detection antibody. Range: 31.3-1000 pg/mL



The mean SOX10 concentration was determined to be 24.4 ng/mL in MDA-MB-453 cell extract based on a 1.5 mg/mL extract load and 0.2 ng/mL in A431 cell extract based on a 1.2 mg/mL extract load.