

For Research Use Only

# Mouse BTC Recombinant Matched Antibody Pair, PBS Only



Catalog Number:MP02843-1

## Capture Antibody Information

**Catalog Number:**  
87064-2-PBS

**Host:**  
Rabbit

**Isotype:**  
IgG

**Purification Method:**  
Protein A purification

**Clone ID:**  
250780A9

**Reactivity:**  
mouse

**GenBank:**  
NM\_007568.5

**Immunogen Catalog Number:**  
Eg2895

**Conjugate:**  
Unconjugated

**Full name:**  
betacellulin, epidermal growth factor family member

**Gene ID:**  
12223

## Detection Antibody Information

**Catalog Number:**  
87064-1-PBS

**Host:**  
Rabbit

**Isotype:**  
IgG

**Purification Method:**  
Protein A purification

**Clone ID:**  
250780B12

**Reactivity:**  
mouse

**GenBank:**  
NM\_007568.5

**Immunogen Catalog Number:**  
Eg2895

**Conjugate:**  
Unconjugated

**Full name:**  
betacellulin, epidermal growth factor family member

**Gene ID:**  
12223

## Applications

**Tested Applications:**  
Sandwich ELISA

**Range:**  
78.1-5000 pg/mL (Sandwich ELISA)

**Recommended Dilutions:**  
It is recommended that this reagent should be titrated in each testing system to obtain optimal results.

## Product Information

MP02843-1 targets BTC in immunoassays as a matched antibody pair. Validated in Sandwich ELISA.

Capture antibody: Mouse Btc Recombinant monoclonal antibody, PBS Only (Capture) 87064-2-PBS (250780A9). 100  $\mu$ g. Concentration 1 mg/mL.

Detection antibody: Mouse Btc Recombinant monoclonal antibody, PBS Only (Detector) 87064-1-PBS (250780B12). 100  $\mu$ g. Concentration 1 mg/mL.

Unconjugated rabbit recombinant monoclonal antibody pair in PBS only storage buffer at a concentration of 1 mg/mL, ready for conjugation. Created using Proteintech's proprietary in-house recombinant technology. Recombinant production enables unrivalled batch-to-batch consistency, easy scale-up, and future security of supply.

Matched antibody pairs are designed for use in a variety of assays and platforms that require matched antibody pairs.

Antibody use should be optimized for each application and assay.

## Storage

**Storage:**  
Store at -80°C.

**The product is shipped with ice packs. Upon receipt, store it immediately at -80°C**

**Storage buffer:**  
PBS only

For technical support and original validation data for this product please contact:

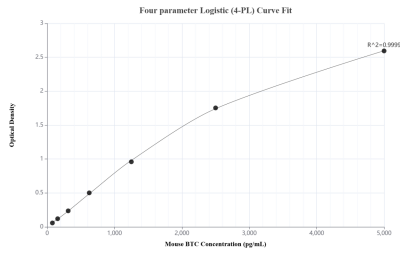
T: 4006900926

E: Proteintech-CN@ptglab.com

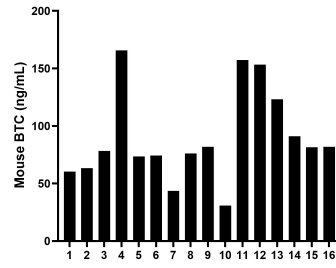
W: ptgcn.com

**This product is exclusively available under Proteintech Group brand and is not available to purchase from any other manufacturer.**

## Selected Validation Data



Sandwich ELISA standard curve of MP02843-1, Mouse BTC Recombinant Matched Antibody Pair - PBS only. 87064-2-PBS was coated to a plate as the capture antibody and incubated with serial dilutions of standard Eg2895. 87064-1-PBS was HRP conjugated as the detection antibody. Range: 78.1-5000 pg/mL



Serum of sixteen mice was measured. The BTC concentration of detected samples was determined to be 89.8 pg/mL with a range of 30.8-165.8 pg/mL