

For Research Use Only

ID3 Recombinant Matched Antibody Pair, PBS Only



Catalog Number:MP02842-1

Capture Antibody Information

Catalog Number:
86979-1-PBS
Host:
Rabbit
Isotype:
IgG
Purification Method:
Protein A purification

Clone ID:
252047B8
Reactivity:
human, mouse, rat
GenBank:
BC003107
Immunogen Catalog Number:
Ag0588

Conjugate:
Unconjugated
Full name:
inhibitor of DNA binding 3, dominant negative helix-loop-helix protein
Gene ID:
3399

Detection Antibody Information

Catalog Number:
86979-2-PBS
Host:
Rabbit
Isotype:
IgG
Purification Method:
Protein A purification

Clone ID:
252047A10
Reactivity:
human
GenBank:
BC003107
Immunogen Catalog Number:
Ag0588

Conjugate:
Unconjugated
Full name:
inhibitor of DNA binding 3, dominant negative helix-loop-helix protein
Gene ID:
3399

Applications

Tested Applications:
Sandwich ELISA

Range:
39.1-2500 pg/mL (Sandwich ELISA)

Recommended Dilutions:
It is recommended that this reagent should be titrated in each testing system to obtain optimal results.

Product Information

MP02842-1 targets ID3 in immunoassays as a matched antibody pair. Validated in Sandwich ELISA.

Capture antibody: ID3 Recombinant monoclonal antibody, PBS Only (Capture) 86979-1-PBS (252047B8). 100 µg. Concentration 1 mg/mL.

Detection antibody: ID3 Recombinant monoclonal antibody, PBS Only (Detector) 86979-2-PBS (252047A10). 100 µg. Concentration 1 mg/mL.

Unconjugated rabbit recombinant monoclonal antibody pair in PBS only storage buffer at a concentration of 1 mg/mL, ready for conjugation. Created using Proteintech's proprietary in-house recombinant technology. Recombinant production enables unrivalled batch-to-batch consistency, easy scale-up, and future security of supply.

Matched antibody pairs are designed for use in a variety of assays and platforms that require matched antibody pairs.

Antibody use should be optimized for each application and assay.

Storage

Storage:
Store at -80°C.
The product is shipped with ice packs. Upon receipt, store it immediately at -80°C
Storage buffer:
PBS only

For technical support and original validation data for this product please contact:

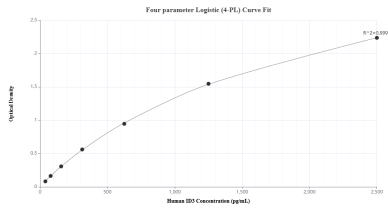
T: 4006900926

E: Proteintech-CN@ptglab.com

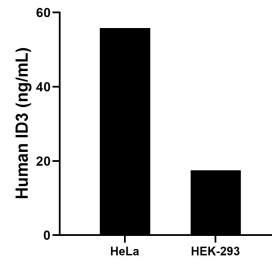
W: ptgcn.com

This product is exclusively available under Proteintech Group brand and is not available to purchase from any other manufacturer.

Selected Validation Data



Sandwich ELISA standard curve of MP02842-1, Human ID3 Recombinant Matched Antibody Pair - PBS only. 86979-1-PBS was coated to a plate as the capture antibody and incubated with serial dilutions of standard Ag0588. 86979-2-PBS was HRP conjugated as the detection antibody. Range: 39.1-2500 pg/mL



The mean ID3 concentration was determined to be 55.78 ng/mL in HeLa cell extract based on a 1.2 mg/mL extract load and 17.49 ng/mL in HEK-293 cell extract based on a 1.2 mg/mL extract load.