

For Research Use Only

Elastin Recombinant Matched Antibody Pair, PBS Only



Catalog Number:MP02840-1

Capture Antibody Information

Catalog Number:
86483-3-PBS
Host:
Rabbit
Isotype:
IgG
Purification Method:
Protein A purification

Clone ID:
251241G9
Reactivity:
human
GenBank:
N/A,无100%匹配
Immunogen Catalog Number:
Eg2766

Conjugate:
Unconjugated
Full name:
elastin
Gene ID:
2006

Detection Antibody Information

Catalog Number:
86483-2-PBS
Host:
Rabbit
Isotype:
IgG
Purification Method:
Protein A purification

Clone ID:
251241E6
Reactivity:
human
GenBank:
N/A,无100%匹配
Immunogen Catalog Number:
Eg2766

Conjugate:
Unconjugated
Full name:
elastin
Gene ID:
2006

Applications

Tested Applications:
Sandwich ELISA

Range:
62.5-4000 pg/mL (Sandwich ELISA)

Recommended Dilutions:
It is recommended that this reagent should be titrated in each testing system to obtain optimal results.

Product Information

MP02840-1 targets Elastin in immunoassays as a matched antibody pair. Validated in Sandwich ELISA.

Capture antibody: ELN Recombinant monoclonal antibody, PBS Only (Capture) 86483-3-PBS (251241G9). 100 μ g. Concentration 1 mg/mL.

Detection antibody: ELN Recombinant monoclonal antibody, PBS Only (Detector) 86483-2-PBS (251241E6). 100 μ g. Concentration 1 mg/mL.

Unconjugated rabbit recombinant monoclonal antibody pair in PBS only storage buffer at a concentration of 1 mg/mL, ready for conjugation. Created using Proteintech's proprietary in-house recombinant technology. Recombinant production enables unrivalled batch-to-batch consistency, easy scale-up, and future security of supply.

Matched antibody pairs are designed for use in a variety of assays and platforms that require matched antibody pairs.

Antibody use should be optimized for each application and assay.

Storage

Storage:
Store at -80°C.
The product is shipped with ice packs. Upon receipt, store it immediately at -80°C
Storage buffer:
PBS only

For technical support and original validation data for this product please contact:

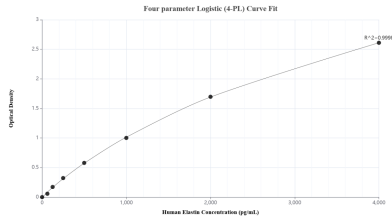
T: 4006900926

E: Proteintech-CN@ptglab.com

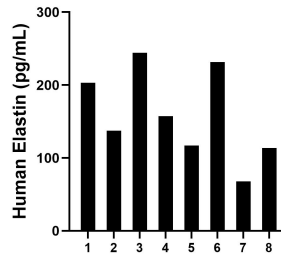
W: ptgcn.com

This product is exclusively available under Proteintech Group brand and is not available to purchase from any other manufacturer.

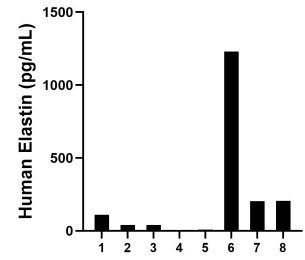
Selected Validation Data



Sandwich ELISA standard curve of MP02840-1, Human Elastin Recombinant Matched Antibody Pair - PBS only. 86483-3-PBS was coated to a plate as the capture antibody and incubated with serial dilutions of standard Eg2766. 86483-2-PBS was HRP conjugated as the detection antibody. Range: 62.5-4000 pg/mL



Serum of eight individual healthy human donors was measured. The Elastin concentration of detected samples was determined to be 159.0 pg/mL with a range of 67.9-244.2 pg/mL.



Plasma of eight individual healthy human donors was measured. The Elastin concentration of detected samples was determined to be 229.7 pg/mL with a range of 0.2-1,230.6 pg/mL.