

# HADHA Recombinant Matched Antibody Pair, PBS Only

Catalog Number:MP02839-1

## Capture Antibody Information

**Catalog Number:**  
87032-2-PBS

**Host:**  
Rabbit

**Isotype:**  
IgG

**Purification Method:**  
Protein A purification

**Clone ID:**  
252119G11

**Reactivity:**  
human

**GenBank:**  
BC009235

**Immunogen Catalog Number:**  
Ag1211

**Conjugate:**  
Unconjugated

**Full name:**  
hydroxyacyl-Coenzyme A dehydrogenase/3-ketoacyl-Coenzyme A thiolase/enoyl-Coenzyme A hydratase (trifunctional protein), alpha subunit

**Gene ID:**  
3030

## Detection Antibody Information

**Catalog Number:**  
87032-1-PBS

**Host:**  
Rabbit

**Isotype:**  
IgG

**Purification Method:**  
Protein A purification

**Clone ID:**  
252119F11

**Reactivity:**  
human

**GenBank:**  
BC009235

**Immunogen Catalog Number:**  
Ag1211

**Conjugate:**  
Unconjugated

**Full name:**  
hydroxyacyl-Coenzyme A dehydrogenase/3-ketoacyl-Coenzyme A thiolase/enoyl-Coenzyme A hydratase (trifunctional protein), alpha subunit

**Gene ID:**  
3030

## Applications

**Tested Applications:**  
Cytometric bead array

**Range:**  
1.562-200 ng/mL (Cytometric Bead Array)

**Recommended Dilutions:**  
It is recommended that this reagent should be titrated in each testing system to obtain optimal results.

## Product Information

MP02839-1 targets HADHA in immunoassays as a matched antibody pair. Validated in Cytometric bead array.

Capture antibody: HADHA Recombinant monoclonal antibody, PBS Only (Capture) 87032-2-PBS (252119G11). 100 µg. Concentration 1 mg/mL.

Detection antibody: HADHA Recombinant monoclonal antibody, PBS Only (Detector) 87032-1-PBS (252119F11). 100 µg. Concentration 1 mg/mL.

Unconjugated rabbit recombinant monoclonal antibody pair in PBS only storage buffer at a concentration of 1 mg/mL, ready for conjugation. Created using Proteintech's proprietary in-house recombinant technology. Recombinant production enables unrivalled batch-to-batch consistency, easy scale-up, and future security of supply.

Matched antibody pairs are designed for use in a variety of assays and platforms that require matched antibody pairs.

Antibody use should be optimized for each application and assay.

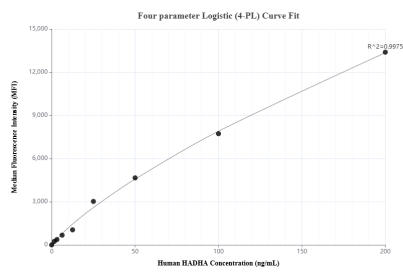
## Storage

**Storage:**  
Store at -80°C.

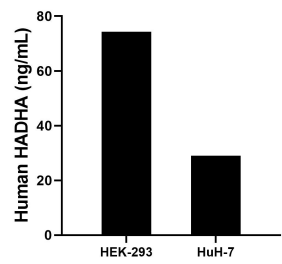
**The product is shipped with ice packs. Upon receipt, store it immediately at -80°C**

**Storage buffer:**  
PBS only

## Selected Validation Data



Cytometric bead array standard curve of MP02839-1, HADHA Recombinant Matched Antibody Pair, PBS Only. Capture antibody: 87032-2-PBS. Detection antibody: 87032-1-PBS. Standard: Ag1211. Range: 1.562-200 ng/mL.



The mean HADHA concentration was determined to be 74.3 ng/mL in HEK-293 cell extract based on a 1.2 mg/mL extract load, 29.0 ng/mL in HuH-7 cell extract based on a 1.2 mg/mL extract load.