

For Research Use Only

MICB Recombinant Matched Antibody Pair, PBS Only



Catalog Number:MP02835-1

Capture Antibody Information

Catalog Number:
86774-3-PBS
Host:
Rabbit
Isotype:
IgG
Purification Method:
Protein A purification

Clone ID:
251684B3
Reactivity:
human
GenBank:
NM_005931.4
Immunogen Catalog Number:
Eg6138

Conjugate:
Unconjugated
Full name:
MHC class I polypeptide-related sequence B
Gene ID:
4277

Detection Antibody Information

Catalog Number:
86774-2-PBS
Host:
Rabbit
Isotype:
IgG
Purification Method:
Protein A purification

Clone ID:
251684C7
Reactivity:
human
GenBank:
NM_005931.4
Immunogen Catalog Number:
Eg6138

Conjugate:
Unconjugated
Full name:
MHC class I polypeptide-related sequence B
Gene ID:
4277

Applications

Tested Applications:
Sandwich ELISA

Range:
15.6-1000 pg/mL (Sandwich ELISA)

Recommended Dilutions:
It is recommended that this reagent should be titrated in each testing system to obtain optimal results.

Product Information

MP02835-1 targets MICB in immunoassays as a matched antibody pair. Validated in Sandwich ELISA.

Capture antibody: MICB Recombinant monoclonal antibody, PBS Only (Capture) 86774-3-PBS (251684B3). 100 µg. Concentration 1 mg/mL.

Detection antibody: MICB Recombinant monoclonal antibody, PBS Only (Detector) 86774-2-PBS (251684C7). 100 µg. Concentration 1 mg/mL.

Unconjugated rabbit recombinant monoclonal antibody pair in PBS only storage buffer at a concentration of 1 mg/mL, ready for conjugation. Created using Proteintech's proprietary in-house recombinant technology. Recombinant production enables unrivalled batch-to-batch consistency, easy scale-up, and future security of supply.

Matched antibody pairs are designed for use in a variety of assays and platforms that require matched antibody pairs.

Antibody use should be optimized for each application and assay.

Storage

Storage:
Store at -80°C.
The product is shipped with ice packs. Upon receipt, store it immediately at -80°C
Storage buffer:
PBS only

For technical support and original validation data for this product please contact:

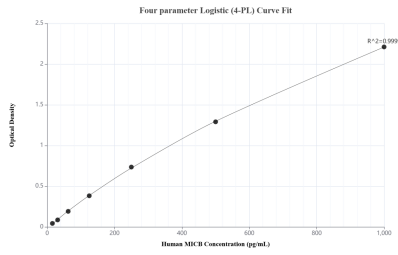
T: 4006900926

E: Proteintech-CN@ptglab.com

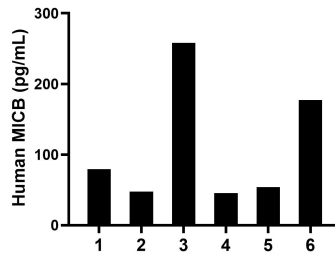
W: ptgcn.com

This product is exclusively available under Proteintech Group brand and is not available to purchase from any other manufacturer.

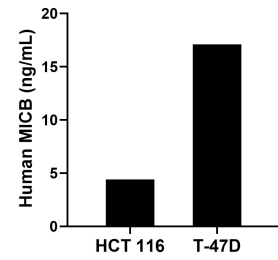
Selected Validation Data



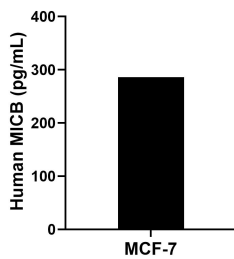
Sandwich ELISA standard curve of MP02835-1, Human MICB Recombinant Matched Antibody Pair - PBS only. 86774-3-PBS was coated to a plate as the capture antibody and incubated with serial dilutions of standard Eg6138. 86774-2-PBS was HRP conjugated as the detection antibody. Range: 15.6-1000 pg/mL



Serum of six individual healthy human donors was measured. The MICB concentration of detected samples was determined to be 110.3 pg/mL with a range of 45.5-258.0 pg/mL.



The mean MICB concentration was determined to be 4.4 ng/mL in HCT 116 cell extract based on a 1.3 mg/mL extract load and 17.1 ng/mL in T-47D cell extract based on a 1.2 mg/mL extract load.



MCF-7 were cultured in DMEM supplemented with 10% fetal bovine serum, 2.5 mM L-glutamine, 100 U/mL penicillin, and 100 µg/mL streptomycin sulfate. An aliquot of the cell culture supernate was removed, assayed for human MICB, and measured 285.8 pg/mL.