

ADAM8 Recombinant Matched Antibody Pair, PBS Only

Catalog Number: **MP02833-1**

Capture Antibody Information

Catalog Number:
87008-3-PBS
Host:
Rabbit
Isotype:
IgG
Purification Method:
Protein A purification

Clone ID:
251352H6
Reactivity:
human
GenBank:
NM_001109.4
Immunogen Catalog Number:
Eg2912

Conjugate:
Unconjugated
Full name:
ADAM metallopeptidase domain 8
Gene ID:
101

Detection Antibody Information

Catalog Number:
87008-2-PBS
Host:
Rabbit
Isotype:
IgG
Purification Method:
Protein A purification

Clone ID:
251352A5
Reactivity:
human
GenBank:
NM_001109.4
Immunogen Catalog Number:
Eg2912

Conjugate:
Unconjugated
Full name:
ADAM metallopeptidase domain 8
Gene ID:
101

Applications

Tested Applications:
Sandwich ELISA

Range:
0.625-40 ng/mL (Sandwich ELISA)

Recommended Dilutions:
It is recommended that this reagent should be titrated in each testing system to obtain optimal results.

Product Information

MP02833-1 targets ADAM8 in immunoassays as a matched antibody pair. Validated in Sandwich ELISA.

Capture antibody: ADAM8 Recombinant monoclonal antibody, PBS Only (Capture) 87008-3-PBS (251352H6). 100 µg. Concentration 1 mg/mL.

Detection antibody: ADAM8 Recombinant monoclonal antibody, PBS Only (Detector) 87008-2-PBS (251352A5). 100 µg. Concentration 1 mg/mL.

Unconjugated rabbit recombinant monoclonal antibody pair in PBS only storage buffer at a concentration of 1 mg/mL, ready for conjugation. Created using Proteintech's proprietary in-house recombinant technology. Recombinant production enables unrivalled batch-to-batch consistency, easy scale-up, and future security of supply.

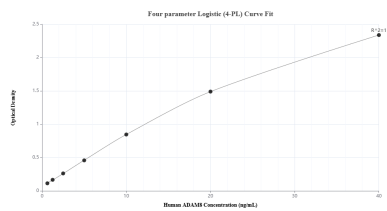
Matched antibody pairs are designed for use in a variety of assays and platforms that require matched antibody pairs.

Antibody use should be optimized for each application and assay.

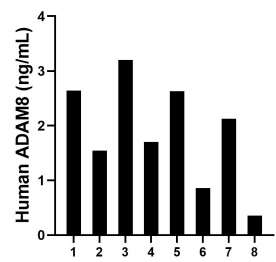
Storage

Storage:
Store at -80°C.
The product is shipped with ice packs. Upon receipt, store it immediately at -80°C
Storage buffer:
PBS only

Selected Validation Data



Sandwich ELISA standard curve of MP02833-1, Human ADAM8 Recombinant Matched Antibody Pair - PBS only. 87008-3-PBS was coated to a plate as the capture antibody and incubated with serial dilutions of standard Eg2912. 87008-2-PBS was HRP conjugated as the detection antibody. Range: 0.625-40 ng/mL



Serum of eight individual healthy human donors was measured. The human ADAM8 concentration of detected samples was determined to be 1.88 ng/mL with a range of 0.36 - 3.20 ng/mL