

For Research Use Only

Rat Serpin A12/Vaspin Recombinant Matched Antibody Pair, PBS Only



Catalog Number:MP02832-1

Capture Antibody Information

Catalog Number:
86801-2-PBS
Host:
Rabbit
Isotype:
IgG
Purification Method:
Protein A purification

Clone ID:
251279E11
Reactivity:
rat
GenBank:
Immunogen Catalog Number:
Eg3407

Conjugate:
Unconjugated
Full name:
serine (or cysteine) peptidase inhibitor, clade A (alpha-1 antiproteinase, antitrypsin), member 12
Gene ID:
191570

Detection Antibody Information

Catalog Number:
86801-1-PBS
Host:
Rabbit
Isotype:
IgG
Purification Method:
Protein A purification

Clone ID:
251279E6
Reactivity:
rat
GenBank:
Immunogen Catalog Number:
Eg3407

Conjugate:
Unconjugated
Full name:
serine (or cysteine) peptidase inhibitor, clade A (alpha-1 antiproteinase, antitrypsin), member 12
Gene ID:
191570

Applications

Tested Applications:
Sandwich ELISA

Range:
1.25-20 ng/mL (Sandwich ELISA)

Recommended Dilutions:
It is recommended that this reagent should be titrated in each testing system to obtain optimal results.

Product Information

MP02832-1 targets Serpin A12/Vaspin in immunoassays as a matched antibody pair. Validated in Sandwich ELISA.
Capture antibody: Rat Serpin A12 Recombinant monoclonal antibody, PBS Only (Capture) 86801-2-PBS (251279E11). 100 µg. Concentration 1 mg/mL.
Detection antibody: Rat Serpin A12 Recombinant monoclonal antibody, PBS Only (Detector) 86801-1-PBS (251279E6). 100 µg. Concentration 1 mg/mL.
Unconjugated rabbit recombinant monoclonal antibody pair in PBS only storage buffer at a concentration of 1 mg/mL, ready for conjugation. Created using Proteintech's proprietary in-house recombinant technology. Recombinant production enables unrivalled batch-to-batch consistency, easy scale-up, and future security of supply.
Matched antibody pairs are designed for use in a variety of assays and platforms that require matched antibody pairs.
Antibody use should be optimized for each application and assay.

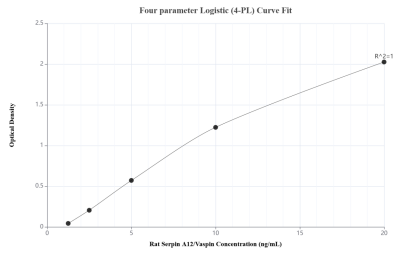
Storage

Storage:
Store at -80°C.
The product is shipped with ice packs. Upon receipt, store it immediately at -80°C
Storage buffer:
PBS only

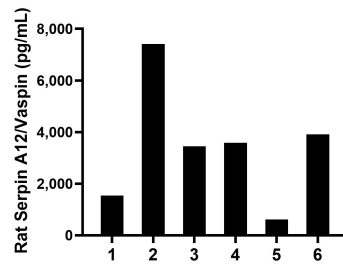
For technical support and original validation data for this product please contact:
T: 4006900926 E: Proteintech-CN@ptglab.com W: ptgcn.com

This product is exclusively available under Proteintech Group brand and is not available to purchase from any other manufacturer.

Selected Validation Data



Sandwich ELISA standard curve of MP02832-1, Rat Serpin A12/Vaspin Recombinant Matched Antibody Pair - PBS only. 86801-2-PBS was coated to a plate as the capture antibody and incubated with serial dilutions of standard Eg3407. 86801-1-PBS was HRP conjugated as the detection antibody. Range: 1.25-20 ng/mL



Serum of eight rats was measured. The Serpin A12/Vaspin concentration of detected samples was determined to be 3,420.9 pg/mL with a range of 618.2-7,418.0 pg/mL