

For Research Use Only

Mouse MMP-8 Recombinant Matched Antibody Pair, PBS Only



Catalog Number:MP02831-1

Capture Antibody Information

Catalog Number:
86567-2-PBS

Host:
Rabbit

Isotype:
IgG

Purification Method:
Protein A purification

Clone ID:
250323F6

Reactivity:
mouse

GenBank:
NM_008611.4

Immunogen Catalog Number:
Eg3161

Conjugate:
Unconjugated

Full name:
matrix metalloproteinase 8

Gene ID:
17394

Detection Antibody Information

Catalog Number:
86567-1-PBS

Host:
Rabbit

Isotype:
IgG

Purification Method:
Protein A purification

Clone ID:
250323D5

Reactivity:
mouse

GenBank:
NM_008611.4

Immunogen Catalog Number:
Eg3161

Conjugate:
Unconjugated

Full name:
matrix metalloproteinase 8

Gene ID:
17394

Applications

Tested Applications:
Sandwich ELISA

Range:
62.5-4000 pg/mL (Sandwich ELISA)

Recommended Dilutions:
It is recommended that this reagent should be titrated in each testing system to obtain optimal results.

Product Information

MP02831-1 targets MMP-8 in immunoassays as a matched antibody pair. Validated in Sandwich ELISA.

Capture antibody: Mouse Mmp8 Recombinant monoclonal antibody, PBS Only (Capture) 86567-2-PBS (250323F6). 100 µg. Concentration 1 mg/mL.

Detection antibody: Mouse Mmp8 Recombinant monoclonal antibody, PBS Only (Detector) 86567-1-PBS (250323D5). 100 µg. Concentration 1 mg/mL.

Unconjugated rabbit recombinant monoclonal antibody pair in PBS only storage buffer at a concentration of 1 mg/mL, ready for conjugation. Created using Proteintech's proprietary in-house recombinant technology. Recombinant production enables unrivalled batch-to-batch consistency, easy scale-up, and future security of supply.

Matched antibody pairs are designed for use in a variety of assays and platforms that require matched antibody pairs.

Antibody use should be optimized for each application and assay.

Storage

Storage:
Store at -80°C.

The product is shipped with ice packs. Upon receipt, store it immediately at -80°C

Storage buffer:
PBS only

For technical support and original validation data for this product please contact:

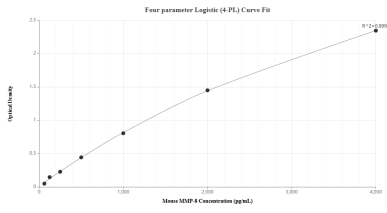
T: 4006900926

E: Proteintech-CN@ptglab.com

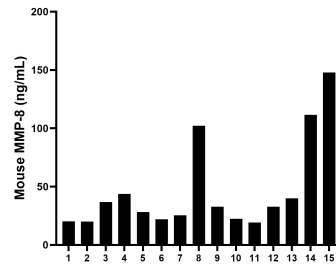
W: ptgcn.com

This product is exclusively available under Proteintech Group brand and is not available to purchase from any other manufacturer.

Selected Validation Data



Sandwich ELISA standard curve of MP02831-1, Mouse MMP-8 Recombinant Matched Antibody Pair - PBS only. 86567-2-PBS was coated to a plate as the capture antibody and incubated with serial dilutions of standard Eg3161. 86567-1-PBS was HRP conjugated as the detection antibody. Range: 62.5-4000 pg/mL



Serum of mice was measured. The mouse MMP-8 concentration of detected samples was determined to be 47.01 ng/mL with a range of 19.2 - 147.85 ng/mL