

LOXL1 Recombinant Matched Antibody Pair, PBS Only

Catalog Number: **MP02828-1**

Capture Antibody Information

Catalog Number: 86534-1-PBS	Clone ID: 251345F4	Conjugate: Unconjugated
Host: Rabbit	Reactivity: human	Full name: lysyl oxidase-like 1
Isotype: IgG	GenBank: BC015090	Gene ID: 4016
Purification Method: Protein A purification	Immunogen Catalog Number: Ag24293	

Detection Antibody Information

Catalog Number: 86534-3-PBS	Clone ID: 251345C7	Conjugate: Unconjugated
Host: Rabbit	Reactivity: human	Full name: lysyl oxidase-like 1
Isotype: IgG	GenBank: BC015090	Gene ID: 4016
Purification Method: Protein A purification	Immunogen Catalog Number: Ag24293	

Applications

Tested Applications: Sandwich ELISA	Range: 1.56-100 ng/mL (Sandwich ELISA)	Recommended Dilutions: It is recommended that this reagent should be titrated in each testing system to obtain optimal results.
--	---	--

Product Information

MP02828-1 targets LOXL1 in immunoassays as a matched antibody pair. Validated in Sandwich ELISA.

Capture antibody: LOXL1 Recombinant monoclonal antibody, PBS Only (Capture) 86534-1-PBS (251345F4). 100 µg. Concentration 1 mg/mL.

Detection antibody: LOXL1 Recombinant monoclonal antibody, PBS Only (Detector) 86534-3-PBS (251345C7). 100 µg. Concentration 1 mg/mL.

Unconjugated rabbit recombinant monoclonal antibody pair in PBS only storage buffer at a concentration of 1 mg/mL, ready for conjugation. Created using Proteintech's proprietary in-house recombinant technology. Recombinant production enables unrivalled batch-to-batch consistency, easy scale-up, and future security of supply.

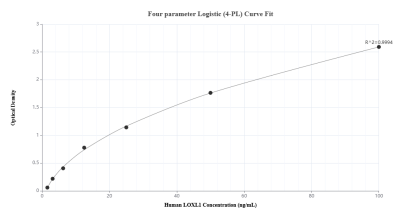
Matched antibody pairs are designed for use in a variety of assays and platforms that require matched antibody pairs.

Antibody use should be optimized for each application and assay.

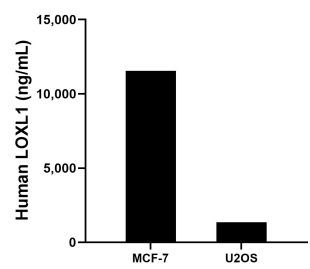
Storage

Storage:
Store at -80°C.
The product is shipped with ice packs. Upon receipt, store it immediately at -80°C
Storage buffer:
PBS only

Selected Validation Data



Sandwich ELISA standard curve of MP02828-1, Human LOXL1 Recombinant Matched Antibody Pair - PBS only. 86534-1-PBS was coated to a plate as the capture antibody and incubated with serial dilutions of standard Ag24293. 86534-3-PBS was HRP conjugated as the detection antibody. Range: 1.56-100 ng/mL



The mean LOXL1 concentration was determined to be 11,541.0 ng/mL in MCF-7 cell extract based on a 1.2 mg/mL extract load and 1,341.0 ng/mL in U2OS cell extract based on a 1.2 mg/mL extract load.