

For Research Use Only

# JAB1 Recombinant Matched Antibody Pair, PBS Only



Catalog Number:MP02823-2

## Capture Antibody Information

**Catalog Number:**  
87012-1-PBS  
**Host:**  
Rabbit  
**Isotype:**  
IgG  
**Purification Method:**  
Protein A purification

**Clone ID:**  
252139B3  
**Reactivity:**  
human, mouse  
**GenBank:**  
BC001187  
**Immunogen Catalog Number:**  
Ag25950

**Conjugate:**  
Unconjugated  
**Full name:**  
COP9 constitutive photomorphogenic homolog subunit 5 (Arabidopsis)  
**Gene ID:**  
10987

## Detection Antibody Information

**Catalog Number:**  
87012-3-PBS  
**Host:**  
Rabbit  
**Isotype:**  
IgG  
**Purification Method:**  
Protein A purification

**Clone ID:**  
252139A5  
**Reactivity:**  
human  
**GenBank:**  
BC001187  
**Immunogen Catalog Number:**  
Ag25950

**Conjugate:**  
Unconjugated  
**Full name:**  
COP9 constitutive photomorphogenic homolog subunit 5 (Arabidopsis)  
**Gene ID:**  
10987

## Applications

**Tested Applications:**  
Sandwich ELISA

**Range:**  
0.156-10 ng/mL (Sandwich ELISA)

**Recommended Dilutions:**  
It is recommended that this reagent should be titrated in each testing system to obtain optimal results.

## Product Information

MP02823-2 targets JAB1 in immunoassays as a matched antibody pair. Validated in Sandwich ELISA.

Capture antibody: JAB1 Recombinant monoclonal antibody, PBS Only (Capture) 87012-1-PBS (252139B3). 100 µg. Concentration 1 mg/mL.

Detection antibody: JAB1 Recombinant monoclonal antibody, PBS Only (Detector) 87012-3-PBS (252139A5). 100 µg. Concentration 1 mg/mL.

Unconjugated rabbit recombinant monoclonal antibody pair in PBS only storage buffer at a concentration of 1 mg/mL, ready for conjugation. Created using Proteintech's proprietary in-house recombinant technology. Recombinant production enables unrivalled batch-to-batch consistency, easy scale-up, and future security of supply.

Matched antibody pairs are designed for use in a variety of assays and platforms that require matched antibody pairs.

Antibody use should be optimized for each application and assay.

## Storage

**Storage:**  
Store at -80°C.  
**The product is shipped with ice packs. Upon receipt, store it immediately at -80°C**  
**Storage buffer:**  
PBS only

For technical support and original validation data for this product please contact:

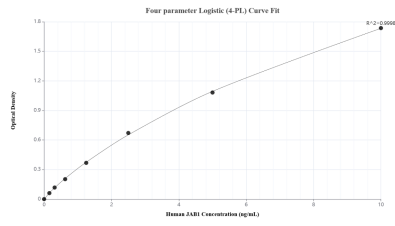
T: 4006900926

E: Proteintech-CN@ptglab.com

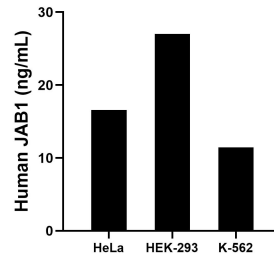
W: ptgcn.com

**This product is exclusively available under Proteintech Group brand and is not available to purchase from any other manufacturer.**

## Selected Validation Data



Sandwich ELISA standard curve of MP02823-2, Human JAB1 Recombinant Matched Antibody Pair - PBS only. 87012-1-PBS was coated to a plate as the capture antibody and incubated with serial dilutions of standard Ag25950. 87012-3-PBS was HRP conjugated as the detection antibody. Range: 0.156-10 ng/mL



The mean JAB1 concentration was determined to be 16.58 ng/mL in HeLa cell extract based on a 1.20 mg/mL extract load, 27.02 ng/mL in HEK-293 cell extract based on a 1.20 mg/mL extract load and 11.45 ng/mL in K-562 cell extract based on a 1.20 mg/mL extract load.