

For Research Use Only

PRKCSH Recombinant Matched Antibody Pair, PBS Only



Catalog Number:MP02821-1

Capture Antibody Information

Catalog Number:
87004-2-PBS

Host:
Rabbit

Isotype:
IgG

Purification Method:
Protein A purification

Clone ID:
252090A9

Reactivity:
human

GenBank:
BC013586

Immunogen Catalog Number:
Ag2796

Conjugate:
Unconjugated

Full name:
protein kinase C substrate 80K-H

Gene ID:
5589

Detection Antibody Information

Catalog Number:
87004-1-PBS

Host:
Rabbit

Isotype:
IgG

Purification Method:
Protein A purification

Clone ID:
252090G4

Reactivity:
human

GenBank:
BC013586

Immunogen Catalog Number:
Ag2796

Conjugate:
Unconjugated

Full name:
protein kinase C substrate 80K-H

Gene ID:
5589

Applications

Tested Applications:
Cytometric bead array

Range:
0.469-60 ng/mL (Cytometric Bead Array)

Recommended Dilutions:
It is recommended that this reagent should be titrated in each testing system to obtain optimal results.

Product Information

MP02821-1 targets PRKCSH in immunoassays as a matched antibody pair. Validated in Cytometric bead array.

Capture antibody: PRKCSH Recombinant monoclonal antibody, PBS Only (Capture) 87004-2-PBS (252090A9). 100 μ g. Concentration 1 mg/mL.

Detection antibody: PRKCSH Recombinant monoclonal antibody, PBS Only (Detector) 87004-1-PBS (252090G4). 100 μ g. Concentration 1 mg/mL.

Unconjugated rabbit recombinant monoclonal antibody pair in PBS only storage buffer at a concentration of 1 mg/mL, ready for conjugation. Created using Proteintech's proprietary in-house recombinant technology. Recombinant production enables unrivalled batch-to-batch consistency, easy scale-up, and future security of supply.

Matched antibody pairs are designed for use in a variety of assays and platforms that require matched antibody pairs.

Antibody use should be optimized for each application and assay.

Storage

Storage:
Store at -80°C.

The product is shipped with ice packs. Upon receipt, store it immediately at -80°C

Storage buffer:
PBS only

For technical support and original validation data for this product please contact:

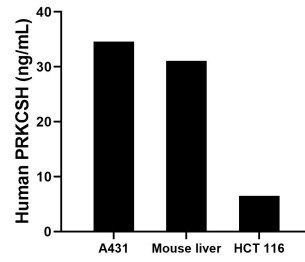
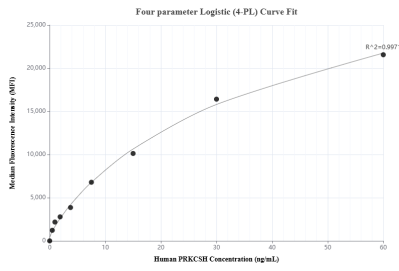
T: 4006900926

E: Proteintech-CN@ptglab.com

W: ptgcn.com

This product is exclusively available under Proteintech Group brand and is not available to purchase from any other manufacturer.

Selected Validation Data



Cytometric bead array standard curve of MPO2821-1, PRKCSH Recombinant Matched Antibody Pair, PBS Only. Capture antibody: 87004-2-PBS. Detection antibody: 87004-1-PBS. Standard: Ag2796. Range: 0.469-60 ng/mL.

The mean PRKCSH concentration was determined to be 34.6 ng/mL in A431 cell extract based on a 1.2 mg/mL extract load, 31.1 ng/mL in mouse liver tissue extract based on a 8.4 mg/mL extract load, 6.5 ng/mL in HCT 116 cell extract based on a 1.2 mg/mL extract load.