

KRR1 Recombinant Matched Antibody Pair, PBS Only

Catalog Number: MP02819-2

Capture Antibody Information

Catalog Number:
86993-2-PBS
Host:
Rabbit
Isotype:
IgG
Purification Method:
Protein A purification

Clone ID:
252034H4
Reactivity:
human
GenBank:
BC026107
Immunogen Catalog Number:
Ag3464

Conjugate:
Unconjugated
Full name:
KRR1, small subunit (SSU) processome component, homolog (yeast)
Gene ID:
11103

Detection Antibody Information

Catalog Number:
86993-4-PBS
Host:
Rabbit
Isotype:
IgG
Purification Method:
Protein A purification

Clone ID:
252034G4
Reactivity:
human
GenBank:
BC026107
Immunogen Catalog Number:
Ag3464

Conjugate:
Unconjugated
Full name:
KRR1, small subunit (SSU) processome component, homolog (yeast)
Gene ID:
11103

Applications

Tested Applications:
Sandwich ELISA

Range:
0.313-20 ng/mL (Sandwich ELISA)

Recommended Dilutions:
It is recommended that this reagent should be titrated in each testing system to obtain optimal results.

Product Information

MP02819-2 targets KRR1 in immunoassays as a matched antibody pair. Validated in Sandwich ELISA.

Capture antibody: KRR1 Recombinant monoclonal antibody, PBS Only (Capture) 86993-2-PBS (252034H4). 100 µg. Concentration 1 mg/mL.

Detection antibody: KRR1 Recombinant monoclonal antibody, PBS Only (Detector) 86993-4-PBS (252034G4). 100 µg. Concentration 1 mg/mL.

Unconjugated rabbit recombinant monoclonal antibody pair in PBS only storage buffer at a concentration of 1 mg/mL, ready for conjugation. Created using Proteintech's proprietary in-house recombinant technology. Recombinant production enables unrivalled batch-to-batch consistency, easy scale-up, and future security of supply.

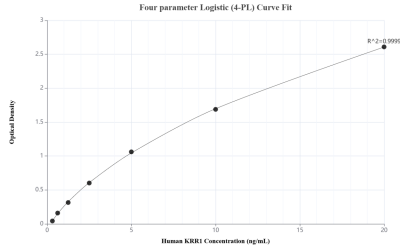
Matched antibody pairs are designed for use in a variety of assays and platforms that require matched antibody pairs.

Antibody use should be optimized for each application and assay.

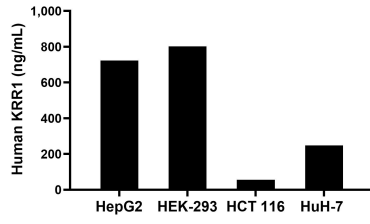
Storage

Storage:
Store at -80°C.
The product is shipped with ice packs. Upon receipt, store it immediately at -80°C
Storage buffer:
PBS only

Selected Validation Data



Sandwich ELISA standard curve of MP02819-2, Human KRR1 Recombinant Matched Antibody Pair - PBS only. 86993-2-PBS was coated to a plate as the capture antibody and incubated with serial dilutions of standard Ag3464. 86993-4-PBS was HRP conjugated as the detection antibody. Range: 0.313-20 ng/mL



The mean KRR1 concentration was determined to be 722.68 ng/mL in HepG2 cell extract based on a 1.20 mg/mL extract load, 802.60 ng/mL in HEK-293 cell extract based on a 1.20 mg/mL extract load, 56.10 ng/mL in HCT 116 cell extract based on a 1.20 mg/mL extract load and 247.22 ng/mL in HuH-7 cell extract based on a 1.20 mg/mL extract load.