

For Research Use Only

KRR1 Recombinant Matched Antibody Pair, PBS Only



Catalog Number:MP02819-1

Capture Antibody Information

Catalog Number:
86993-2-PBS
Host:
Rabbit
Isotype:
IgG
Purification Method:
Protein A purification

Clone ID:
252034H4
Reactivity:
human
GenBank:
BC026107
Immunogen Catalog Number:
Ag3464

Conjugate:
Unconjugated
Full name:
KRR1, small subunit (SSU) processome component, homolog (yeast)
Gene ID:
11103

Detection Antibody Information

Catalog Number:
86993-1-PBS
Host:
Rabbit
Isotype:
IgG
Purification Method:
Protein A purification

Clone ID:
252034C3
Reactivity:
human
GenBank:
BC026107
Immunogen Catalog Number:
Ag3464

Conjugate:
Unconjugated
Full name:
KRR1, small subunit (SSU) processome component, homolog (yeast)
Gene ID:
11103

Applications

Tested Applications:
Cytometric bead array

Range:
0.781-100 ng/mL (Cytometric Bead Array)

Recommended Dilutions:
It is recommended that this reagent should be titrated in each testing system to obtain optimal results.

Product Information

MP02819-1 targets KRR1 in immunoassays as a matched antibody pair. Validated in Cytometric bead array.

Capture antibody: KRR1 Recombinant monoclonal antibody, PBS Only (Capture) 86993-2-PBS (252034H4). 100 µg. Concentration 1 mg/mL.

Detection antibody: KRR1 Recombinant monoclonal antibody, PBS Only (Detector) 86993-1-PBS (252034C3). 100 µg. Concentration 1 mg/mL.

Unconjugated rabbit recombinant monoclonal antibody pair in PBS only storage buffer at a concentration of 1 mg/mL, ready for conjugation. Created using Proteintech's proprietary in-house recombinant technology. Recombinant production enables unrivalled batch-to-batch consistency, easy scale-up, and future security of supply.

Matched antibody pairs are designed for use in a variety of assays and platforms that require matched antibody pairs.

Antibody use should be optimized for each application and assay.

Storage

Storage:
Store at -80°C.
The product is shipped with ice packs. Upon receipt, store it immediately at -80°C
Storage buffer:
PBS only

For technical support and original validation data for this product please contact:

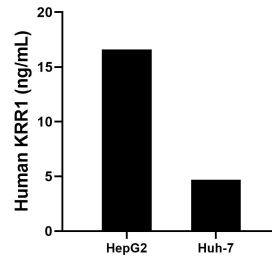
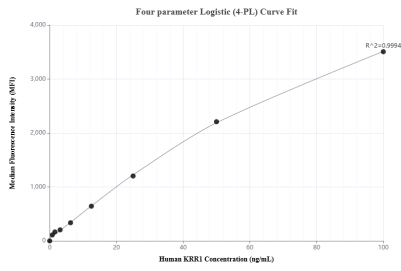
T: 4006900926

E: Proteintech-CN@ptglab.com

W: ptgcn.com

This product is exclusively available under Proteintech Group brand and is not available to purchase from any other manufacturer.

Selected Validation Data



Cytometric bead array standard curve of MP02819-1, KRR1 Recombinant Matched Antibody Pair, PBS Only. Capture antibody: 86993-2-PBS. Detection antibody: 86993-1-PBS. Standard: Ag3464. Range: 0.781-100 ng/mL.

The mean KRR1 concentration was determined to be 16.6 ng/mL in HepG2 cell extract based on a 1.2 mg/mL extract load, 4.7 ng/mL in Huh-7 cell extract based on a 1.2 mg/mL extract load.