

For Research Use Only

# TIP30 Recombinant Matched Antibody Pair, PBS Only



Catalog Number:MP02818-1

## Capture Antibody Information

Catalog Number:  
86972-2-PBS

Host:  
Rabbit

Isotype:  
IgG

Purification Method:  
Protein A purification

Clone ID:  
252091C7

Reactivity:  
human

GenBank:  
BC002439

Immunogen Catalog Number:  
Ag0353

Conjugate:  
Unconjugated

Full name:  
HIV-1 Tat interactive protein 2, 30kDa

Gene ID:  
10553

## Detection Antibody Information

Catalog Number:  
86972-1-PBS

Host:  
Rabbit

Isotype:  
IgG

Purification Method:  
Protein A purification

Clone ID:  
252091A12

Reactivity:  
human

GenBank:  
BC002439

Immunogen Catalog Number:  
Ag0353

Conjugate:  
Unconjugated

Full name:  
HIV-1 Tat interactive protein 2, 30kDa

Gene ID:  
10553

## Applications

Tested Applications:  
Cytometric bead array

Range:  
0.781-50 ng/mL (Cytometric Bead Array)

Recommended Dilutions:  
It is recommended that this reagent should be titrated in each testing system to obtain optimal results.

## Product Information

MP02818-1 targets TIP30 in immunoassays as a matched antibody pair. Validated in Cytometric bead array.

Capture antibody: TIP30 Recombinant monoclonal antibody, PBS Only (Capture) 86972-2-PBS (252091C7). 100  $\mu$ g. Concentration 1 mg/mL.

Detection antibody: TIP30 Recombinant monoclonal antibody, PBS Only (Detector) 86972-1-PBS (252091A12). 100  $\mu$ g. Concentration 1 mg/mL.

Unconjugated rabbit recombinant monoclonal antibody pair in PBS only storage buffer at a concentration of 1 mg/mL, ready for conjugation. Created using Proteintech's proprietary in-house recombinant technology. Recombinant production enables unrivalled batch-to-batch consistency, easy scale-up, and future security of supply.

Matched antibody pairs are designed for use in a variety of assays and platforms that require matched antibody pairs.

Antibody use should be optimized for each application and assay.

## Storage

Storage:  
Store at -80°C.

The product is shipped with ice packs. Upon receipt, store it immediately at -80°C

Storage buffer:  
PBS only

For technical support and original validation data for this product please contact:

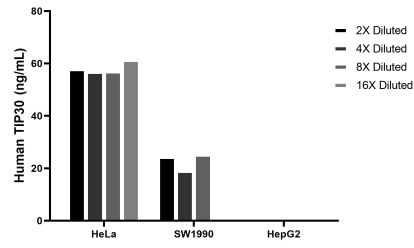
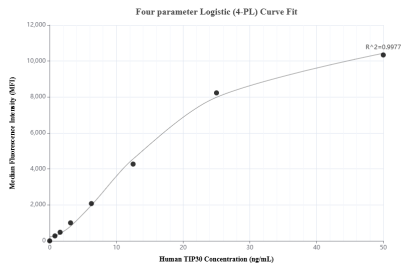
T: 4006900926

E: Proteintech-CN@ptglab.com

W: ptgcn.com

This product is exclusively available under Proteintech Group brand and is not available to purchase from any other manufacturer.

## Selected Validation Data



Cytometric bead array standard curve of MP02818-1, TIP30 Recombinant Matched Antibody Pair, PBS Only. Capture antibody: 86972-2-PBS. Detection antibody: 86972-1-PBS. Standard: Ag0353. Range: 0.781-50 ng/mL

The mean TIP30 concentration was determined to be 58.3 ng/mL in HeLa cell extract based on a 1.2 mg/mL extract load, 22.8 ng/mL in SW1990 cell extract based on a 1.8 mg/mL extract load, HepG2 cell extract were served as a negative control.