

For Research Use Only

# Mouse CCL17/TARC Recombinant Matched Antibody Pair, PBS Only



Catalog Number:MP02817-1

## Capture Antibody Information

**Catalog Number:**  
86482-3-PBS  
**Host:**  
Rabbit  
**Isotype:**  
IgG  
**Purification Method:**  
Protein A purification

**Clone ID:**  
250385F4  
**Reactivity:**  
mouse  
**GenBank:**  
NM\_011332.3  
**Immunogen Catalog Number:**  
Eg3319

**Conjugate:**  
Unconjugated  
**Full name:**  
chemokine (C-C motif) ligand 17  
**Gene ID:**  
20295

## Detection Antibody Information

**Catalog Number:**  
86482-2-PBS  
**Host:**  
Rabbit  
**Isotype:**  
IgG  
**Purification Method:**  
Protein A purification

**Clone ID:**  
250385B8  
**Reactivity:**  
mouse  
**GenBank:**  
NM\_011332.3  
**Immunogen Catalog Number:**  
Eg3319

**Conjugate:**  
Unconjugated  
**Full name:**  
chemokine (C-C motif) ligand 17  
**Gene ID:**  
20295

## Applications

**Tested Applications:**  
Sandwich ELISA

**Range:**  
23.4-1500 pg/mL (Sandwich ELISA)

**Recommended Dilutions:**  
It is recommended that this reagent should be titrated in each testing system to obtain optimal results.

## Product Information

MP02817-1 targets CCL17/TARC in immunoassays as a matched antibody pair. Validated in Sandwich ELISA.

Capture antibody: Mouse Ccl17 Recombinant monoclonal antibody, PBS Only (Capture) 86482-3-PBS (250385F4). 100 µg. Concentration 1 mg/ml.

Detection antibody: Mouse Ccl17 Recombinant monoclonal antibody, PBS Only (Detector) 86482-2-PBS (250385B8). 100 µg. Concentration 1 mg/ml.

Unconjugated rabbit recombinant monoclonal antibody pair in PBS only storage buffer at a concentration of 1 mg/mL, ready for conjugation. Created using Proteintech's proprietary in-house recombinant technology. Recombinant production enables unrivalled batch-to-batch consistency, easy scale-up, and future security of supply.

Matched antibody pairs are designed for use in a variety of assays and platforms that require matched antibody pairs.

Antibody use should be optimized for each application and assay.

## Storage

**Storage:**  
Store at -80°C.  
**The product is shipped with ice packs. Upon receipt, store it immediately at -80°C**  
**Storage buffer:**  
PBS only

For technical support and original validation data for this product please contact:

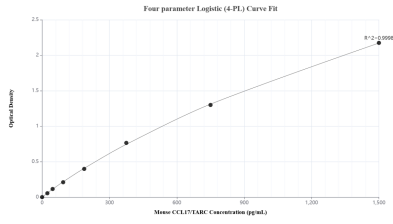
T: 4006900926

E: Proteintech-CN@ptgcn.com

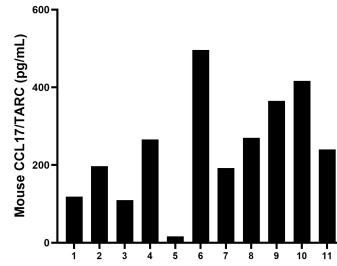
W: ptgcn.com

**This product is exclusively available under Proteintech Group brand and is not available to purchase from any other manufacturer.**

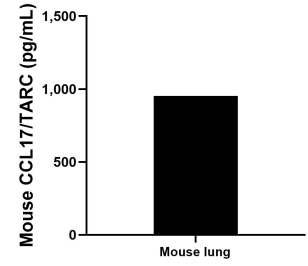
## Selected Validation Data



Sandwich ELISA standard curve of MP02817-1, Mouse CCL17/TARC Recombinant Matched Antibody Pair - PBS only. 86482-3-PBS was coated to a plate as the capture antibody and incubated with serial dilutions of standard Eg3319. 86482-2-PBS was HRP conjugated as the detection antibody. Range: 23.4-1500 pg/mL



Serum of eleven mice was measured. The CCL17/TARC concentration of detected samples was determined to be 244.4 pg/mL with a range of 16.2-496.4 pg/mL.



Mouse lung, cut into 1-2 mm pieces, was cultured in RPMI 1640 supplemented with 10% fetal bovine serum, 2 mM L-glutamine, 100 U/mL penicillin, and 100 µg/mL streptomycin sulfate. An aliquot of the cell culture supernatant was removed, assayed for CCL17/TARC, and measured 952.8 pg/mL