

For Research Use Only

# SDC2 Recombinant Matched Antibody Pair, PBS Only



Catalog Number:MP02814-1

## Capture Antibody Information

Catalog Number:  
87000-2-PBS

Host:  
Rabbit

Isotype:  
IgG

Purification Method:  
Protein A purification

Clone ID:  
251827F11

Reactivity:  
human

GenBank:  
NM\_002998.3

Immunogen Catalog Number:  
Eg2947

Conjugate:  
Unconjugated

Full name:  
syndecan 2

Gene ID:  
6383

## Detection Antibody Information

Catalog Number:  
87000-1-PBS

Host:  
Rabbit

Isotype:  
IgG

Purification Method:  
Protein A purification

Clone ID:  
251827A12

Reactivity:  
human

GenBank:  
NM\_002998.3

Immunogen Catalog Number:  
Eg2947

Conjugate:  
Unconjugated

Full name:  
syndecan 2

Gene ID:  
6383

## Applications

Tested Applications:  
Sandwich ELISA

Range:  
0.781-50 ng/mL (Sandwich ELISA)

Recommended Dilutions:  
It is recommended that this reagent should be titrated in each testing system to obtain optimal results.

## Product Information

MP02814-1 targets SDC2 in immunoassays as a matched antibody pair. Validated in Sandwich ELISA.

Capture antibody: SDC2 Recombinant monoclonal antibody, PBS Only (Capture) 87000-2-PBS (251827F11). 100 µg. Concentration 1 mg/mL.

Detection antibody: SDC2 Recombinant monoclonal antibody, PBS Only (Detector) 87000-1-PBS (251827A12). 100 µg. Concentration 1 mg/mL.

Unconjugated rabbit recombinant monoclonal antibody pair in PBS only storage buffer at a concentration of 1 mg/mL, ready for conjugation. Created using Proteintech's proprietary in-house recombinant technology. Recombinant production enables unrivalled batch-to-batch consistency, easy scale-up, and future security of supply.

Matched antibody pairs are designed for use in a variety of assays and platforms that require matched antibody pairs.

Antibody use should be optimized for each application and assay.

## Storage

Storage:  
Store at -80°C.

The product is shipped with ice packs. Upon receipt, store it immediately at -80°C

Storage buffer:  
PBS only

For technical support and original validation data for this product please contact:

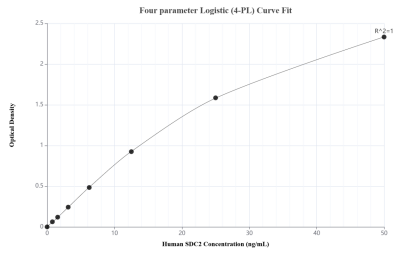
T: 4006900926

E: Proteintech-CN@ptglab.com

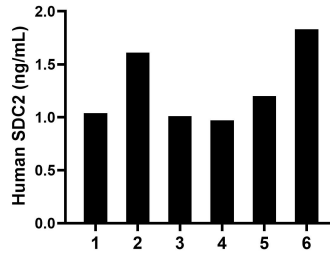
W: ptgcn.com

This product is exclusively available under Proteintech Group brand and is not available to purchase from any other manufacturer.

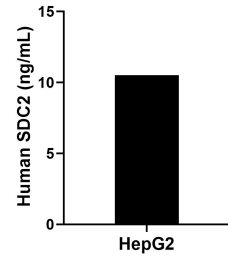
## Selected Validation Data



Sandwich ELISA standard curve of MP02814-1, Human SDC2 Recombinant Matched Antibody Pair - PBS only. 87000-2-PBS was coated to a plate as the capture antibody and incubated with serial dilutions of standard Eg2947. 87000-1-PBS was HRP conjugated as the detection antibody. Range: 0.781-50 ng/mL.



Plasma of six individual healthy human donors was measured. The SDC2 concentration of detected samples was determined to be 1.28 ng/mL with a range of 1.04-1.83 ng/mL.



The mean SDC2 concentration was determined to be 10.51 ng/mL in HepG2 cell extract based on a 1.20 mg/mL extract load.