

AP3S2 Recombinant Matched Antibody Pair, PBS Only

Catalog Number:MP02806-1

Capture Antibody Information

Catalog Number:
86795-2-PBS
Host:
Rabbit
Isotype:
IgG
Purification Method:
Protein A purification

Clone ID:
251741A7
Reactivity:
human
GenBank:
BC002785
Immunogen Catalog Number:
Ag7565

Conjugate:
Unconjugated
Full name:
adaptor-related protein complex 3, sigma 2 subunit
Gene ID:
10239

Detection Antibody Information

Catalog Number:
86795-1-PBS
Host:
Rabbit
Isotype:
IgG
Purification Method:
Protein A purification

Clone ID:
251741C11
Reactivity:
human, mouse, rat
GenBank:
BC002785
Immunogen Catalog Number:
Ag7565

Conjugate:
Unconjugated
Full name:
adaptor-related protein complex 3, sigma 2 subunit
Gene ID:
10239

Applications

Tested Applications:
Sandwich ELISA

Range:
78.1-5000 pg/mL (Sandwich ELISA)

Recommended Dilutions:
It is recommended that this reagent should be titrated in each testing system to obtain optimal results.

Product Information

MP02806-1 targets AP3S2 in immunoassays as a matched antibody pair. Validated in Sandwich ELISA.

Capture antibody: AP3S2 Recombinant monoclonal antibody, PBS Only (Capture) 86795-2-PBS (251741A7). 100 µg. Concentration 1 mg/mL.

Detection antibody: AP3S2 Recombinant monoclonal antibody, PBS Only (Detector) 86795-1-PBS (251741C11). 100 µg. Concentration 1 mg/mL.

Unconjugated rabbit recombinant monoclonal antibody pair in PBS only storage buffer at a concentration of 1 mg/mL, ready for conjugation. Created using Proteintech's proprietary in-house recombinant technology. Recombinant production enables unrivalled batch-to-batch consistency, easy scale-up, and future security of supply.

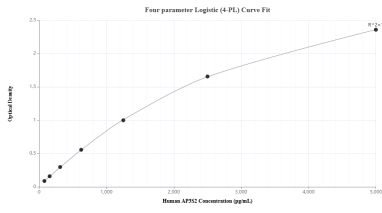
Matched antibody pairs are designed for use in a variety of assays and platforms that require matched antibody pairs.

Antibody use should be optimized for each application and assay.

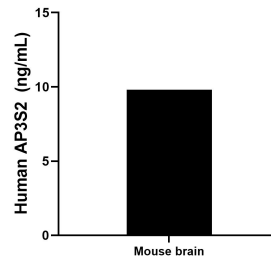
Storage

Storage:
Store at -80°C.
The product is shipped with ice packs. Upon receipt, store it immediately at -80°C
Storage buffer:
PBS only

Selected Validation Data



Sandwich ELISA standard curve of MP02806-1, Human AP3S2 Recombinant Matched Antibody Pair - PBS only. 86795-2-PBS was coated to a plate as the capture antibody and incubated with serial dilutions of standard Ag7565. 86795-1-PBS was HRP conjugated as the detection antibody. Range: 78.1-5000 pg/mL



The mean AP3S2 concentration was determined to be 9.81 ng/mL in mouse brain tissue extract based on a 2.2 mg/mL extract load.