

TrkC Recombinant Matched Antibody Pair, PBS Only

Catalog Number: **MP02803-1**

Capture Antibody Information

Catalog Number:
86692-3-PBS
Host:
Rabbit
Isotype:
IgG
Purification Method:
Protein A purification

Clone ID:
251675G3
Reactivity:
human
GenBank:
NM_001012338.2
Immunogen Catalog Number:
Eg5852

Conjugate:
Unconjugated
Full name:
neurotrophic tyrosine kinase, receptor, type 3
Gene ID:
4916

Detection Antibody Information

Catalog Number:
86692-2-PBS
Host:
Rabbit
Isotype:
IgG
Purification Method:
Protein A purification

Clone ID:
251675F11
Reactivity:
human
GenBank:
NM_001012338.2
Immunogen Catalog Number:
Eg5852

Conjugate:
Unconjugated
Full name:
neurotrophic tyrosine kinase, receptor, type 3
Gene ID:
4916

Applications

Tested Applications:
Sandwich ELISA

Range:
3.13-200 ng/mL (Sandwich ELISA)

Recommended Dilutions:
It is recommended that this reagent should be titrated in each testing system to obtain optimal results.

Product Information

MP02803-1 targets TrkC in immunoassays as a matched antibody pair. Validated in Sandwich ELISA.

Capture antibody: NTRK3 Recombinant monoclonal antibody, PBS Only (Capture) 86692-3-PBS (251675G3). 100 µg. Concentration 1 mg/mL.

Detection antibody: NTRK3 Recombinant monoclonal antibody, PBS Only (Detector) 86692-2-PBS (251675F11). 100 µg. Concentration 1 mg/mL.

Unconjugated rabbit recombinant monoclonal antibody pair in PBS only storage buffer at a concentration of 1 mg/mL, ready for conjugation. Created using Proteintech's proprietary in-house recombinant technology. Recombinant production enables unrivalled batch-to-batch consistency, easy scale-up, and future security of supply.

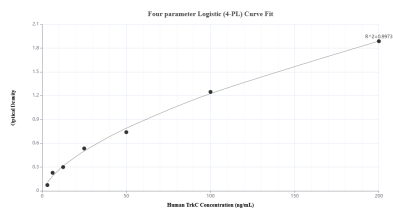
Matched antibody pairs are designed for use in a variety of assays and platforms that require matched antibody pairs.

Antibody use should be optimized for each application and assay.

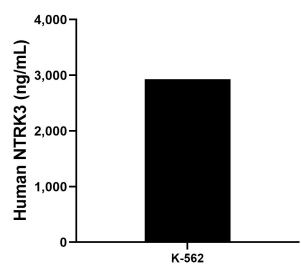
Storage

Storage:
Store at -80°C.
The product is shipped with ice packs. Upon receipt, store it immediately at -80°C
Storage buffer:
PBS only

Selected Validation Data



Sandwich ELISA standard curve of MP02803-1, Human TrkC Recombinant Matched Antibody Pair - PBS only. 86692-3-PBS was coated to a plate as the capture antibody and incubated with serial dilutions of standard Eg5852. 86692-2-PBS was HRP conjugated as the detection antibody. Range: 3.13-200 ng/mL



The mean TrkC concentration was determined to be 2, 929.21 ng/mL in K-562 cell extract based on a 1.2 mg/mL extract load.