

For Research Use Only

JAM3 Recombinant Matched Antibody Pair, PBS Only



Catalog Number:MP02796-2

Capture Antibody Information

Catalog Number:
86960-2-PBS

Host:
Rabbit

Isotype:
IgG

Purification Method:
Protein A purification

Clone ID:
251954A10

Reactivity:
human

GenBank:
NM_032801.5

Immunogen Catalog Number:
Eg6611

Conjugate:
Unconjugated

Full name:
junctional adhesion molecule 3

Gene ID:
83700

Detection Antibody Information

Catalog Number:
86960-3-PBS

Host:
Rabbit

Isotype:
IgG

Purification Method:
Protein A purification

Clone ID:
251954E9

Reactivity:
human

GenBank:
NM_032801.5

Immunogen Catalog Number:
Eg6611

Conjugate:
Unconjugated

Full name:
junctional adhesion molecule 3

Gene ID:
83700

Applications

Tested Applications:
Sandwich ELISA

Range:
125-4000 pg/mL (Sandwich ELISA)

Recommended Dilutions:
It is recommended that this reagent should be titrated in each testing system to obtain optimal results.

Product Information

MP02796-2 targets JAM3 in immunoassays as a matched antibody pair. Validated in Sandwich ELISA.

Capture antibody: JAM3 Recombinant monoclonal antibody, PBS Only (Capture) 86960-2-PBS (251954A10). 100 μ g. Concentration 1 mg/mL.

Detection antibody: JAM3 Recombinant monoclonal antibody, PBS Only (Detector) 86960-3-PBS (251954E9). 100 μ g. Concentration 1 mg/mL.

Unconjugated rabbit recombinant monoclonal antibody pair in PBS only storage buffer at a concentration of 1 mg/mL, ready for conjugation. Created using Proteintech's proprietary in-house recombinant technology. Recombinant production enables unrivalled batch-to-batch consistency, easy scale-up, and future security of supply.

Matched antibody pairs are designed for use in a variety of assays and platforms that require matched antibody pairs.

Antibody use should be optimized for each application and assay.

Storage

Storage:
Store at -80°C.

The product is shipped with ice packs. Upon receipt, store it immediately at -80°C

Storage buffer:
PBS only

For technical support and original validation data for this product please contact:

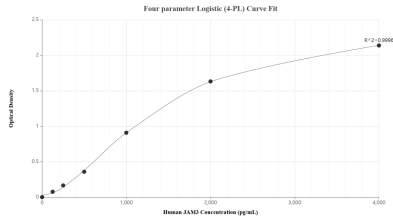
T: 4006900926

E: Proteintech-CN@ptglab.com

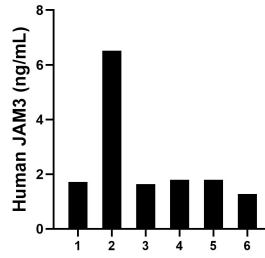
W: ptgcn.com

This product is exclusively available under Proteintech Group brand and is not available to purchase from any other manufacturer.

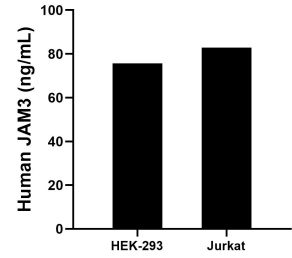
Selected Validation Data



Sandwich ELISA standard curve of MP02796-2, Human JAM3 Recombinant Matched Antibody Pair - PBS only. 86960-2-PBS was coated to a plate as the capture antibody and incubated with serial dilutions of standard Eg6611. 86960-3-PBS was HRP conjugated as the detection antibody. Range: 125--4000 pg/mL



Serum of eight individual healthy human donors was measured. The JAM3 concentration of detected samples was determined to be 2.5 ng/mL with a range of 1.3-6.5 ng/mL.



The mean JAM3 concentration was determined to be 75.6 ng/mL in HEK-293 cell extract based on a 1.2 mg/mL extract load and 82.8 ng/mL in Jurkat cell extract based on a 1.2 mg/mL extract load.