

Mouse Sema5a Recombinant Matched Antibody Pair, PBS Only

Catalog Number:MP02795-1

Capture Antibody Information

Catalog Number:
86961-2-PBS
Host:
Rabbit
Isotype:
IgG
Purification Method:
Protein A purification

Clone ID:
251962D8
Reactivity:
mouse
GenBank:
NM_009154.2
Immunogen Catalog Number:
Eg2689

Conjugate:
Unconjugated
Full name:
sema domain, seven thrombospondin repeats (type 1 and type 1-like), transmembrane domain (TM) and short cytoplasmic domain, (semaphorin) 5A
Gene ID:
20356

Detection Antibody Information

Catalog Number:
86961-1-PBS
Host:
Rabbit
Isotype:
IgG
Purification Method:
Protein A purification

Clone ID:
251962B12
Reactivity:
mouse
GenBank:
NM_009154.2
Immunogen Catalog Number:
Eg2689

Conjugate:
Unconjugated
Full name:
sema domain, seven thrombospondin repeats (type 1 and type 1-like), transmembrane domain (TM) and short cytoplasmic domain, (semaphorin) 5A
Gene ID:
20356

Applications

Tested Applications:
Cytometric bead array

Range:
0.781-100 ng/mL (Cytometric Bead Array)

Recommended Dilutions:
It is recommended that this reagent should be titrated in each testing system to obtain optimal results.

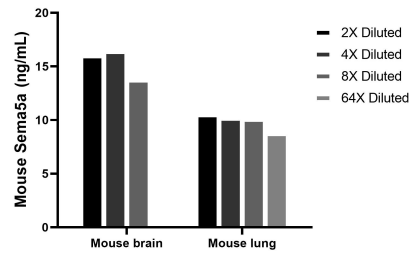
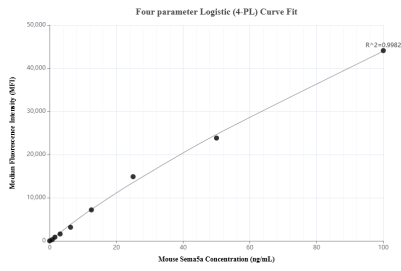
Product Information

MP02795-1 targets Sema5a in immunoassays as a matched antibody pair. Validated in Cytometric bead array.
Capture antibody: Mouse Sema5a Recombinant monoclonal antibody, PBS Only (Capture) 86961-2-PBS (251962D8). 100 µg. Concentration 1 mg/mL.
Detection antibody: Mouse Sema5a Recombinant monoclonal antibody, PBS Only (Detector) 86961-1-PBS (251962B12). 100 µg. Concentration 1 mg/mL.
Unconjugated rabbit recombinant monoclonal antibody pair in PBS only storage buffer at a concentration of 1 mg/mL, ready for conjugation. Created using Proteintech's proprietary in-house recombinant technology. Recombinant production enables unrivalled batch-to-batch consistency, easy scale-up, and future security of supply.
Matched antibody pairs are designed for use in a variety of assays and platforms that require matched antibody pairs.
Antibody use should be optimized for each application and assay.

Storage

Storage:
Store at -80°C.
The product is shipped with ice packs. Upon receipt, store it immediately at -80°C
Storage buffer:
PBS only

Selected Validation Data



Cytometric bead array standard curve of MP02795-1, MOUSE Sema5a Recombinant Matched Antibody Pair, PBS Only. Capture antibody: 86961-2-PBS. Detection antibody: 86961-1-PBS. Standard: Eg2689. Range: 0.781-100 ng/mL.

The mean Sema5a concentration was determined to be 15.4 ng/mL in mouse brain tissue extract based on a 6.3 mg/mL extract load, 9.9 ng/mL in mouse lung tissue extract based on a 5.3 mg/mL extract load.