

Mouse CD8b Recombinant Matched Antibody Pair, PBS Only

Catalog Number: **MP02794-1**

Capture Antibody Information

Catalog Number: 86024-1-PBS	Clone ID: 250480F2	Conjugate: Unconjugated
Host: Rabbit	Reactivity: mouse	Full name: CD8 antigen, beta chain 1
Isotype: IgG	GenBank: NM_009858.2	Gene ID: 12526
Purification Method: Protein A purification	Immunogen Catalog Number: Eg4275	

Detection Antibody Information

Catalog Number: 86024-2-PBS	Clone ID: 250480D12	Conjugate: Unconjugated
Host: Rabbit	Reactivity: mouse	Full name: CD8 antigen, beta chain 1
Isotype: IgG	GenBank: NM_009858.2	Gene ID: 12526
Purification Method: Protein A purification	Immunogen Catalog Number: Eg4275	

Applications

Tested Applications: Cytometric bead array	Range: 0.625-80 ng/mL (Cytometric Bead Array)	Recommended Dilutions: It is recommended that this reagent should be titrated in each testing system to obtain optimal results.
--	---	---

Product Information

MP02794-1 targets CD8b in immunoassays as a matched antibody pair. Validated in Cytometric bead array.

Capture antibody: Mouse CD8b Recombinant monoclonal antibody, PBS Only (Capture) 86024-1-PBS (250480F2). 100 µg. Concentration 1 mg/mL.

Detection antibody: Mouse CD8 beta Recombinant monoclonal antibody, PBS Only (Detector) 86024-2-PBS (250480D12). 100 µg. Concentration 1 mg/mL.

Unconjugated rabbit recombinant monoclonal antibody pair in PBS only storage buffer at a concentration of 1 mg/mL, ready for conjugation. Created using Proteintech's proprietary in-house recombinant technology. Recombinant production enables unrivalled batch-to-batch consistency, easy scale-up, and future security of supply.

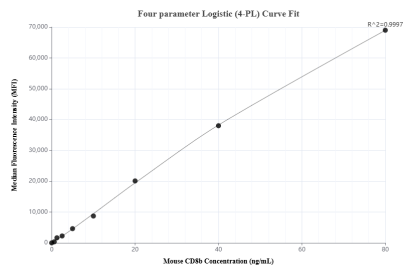
Matched antibody pairs are designed for use in a variety of assays and platforms that require matched antibody pairs.

Antibody use should be optimized for each application and assay.

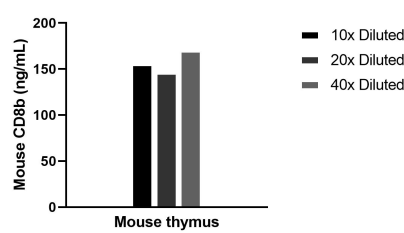
Storage

Storage:
Store at -80°C.
The product is shipped with ice packs. Upon receipt, store it immediately at -80°C
Storage buffer:
PBS only

Selected Validation Data



Cytometric bead array standard curve of MP02794-1, MOUSE CD8b Recombinant Matched Antibody Pair, PBS Only. Capture antibody: 86024-1-PBS. Detection antibody: 86024-2-PBS. Standard: Eg4275. Range: 0.625-80 ng/mL



The mean CD8b concentration was determined to be 157.0 ng/mL in Mouse thymus tissue extract based on a 5.8 mg/mL extract load.