

PTPRF Recombinant Matched Antibody Pair, PBS Only

Catalog Number:MP02791-1

Capture Antibody Information

Catalog Number:
86944-1-PBS
Host:
Rabbit
Isotype:
IgG
Purification Method:
Protein A purification

Clone ID:
252028F8
Reactivity:
human
GenBank:
NM_002840.4
Immunogen Catalog Number:
Eg6919

Conjugate:
Unconjugated
Full name:
protein tyrosine phosphatase, receptor type, F
Gene ID:
5792

Detection Antibody Information

Catalog Number:
86944-2-PBS
Host:
Rabbit
Isotype:
IgG
Purification Method:
Protein A purification

Clone ID:
252028B7
Reactivity:
human
GenBank:
NM_002840.4
Immunogen Catalog Number:
Eg6919

Conjugate:
Unconjugated
Full name:
protein tyrosine phosphatase, receptor type, F
Gene ID:
5792

Applications

Tested Applications:
Cytometric bead array, Sandwich ELISA

Range:
0.625-40 ng/mL (Cytometric Bead Array)
78.1-5000 pg/mL (Sandwich ELISA)

Recommended Dilutions:
It is recommended that this reagent should be titrated in each testing system to obtain optimal results.

Product Information

MP02791-1 targets PTPRF in immunoassays as a matched antibody pair. Validated in Cytometric bead array, Sandwich ELISA.

Capture antibody: PTPRF Recombinant monoclonal antibody, PBS Only (Capture) 86944-1-PBS (252028F8). 100 µg. Concentration 1 mg/mL.

Detection antibody: PTPRF Recombinant monoclonal antibody, PBS Only (Detector) 86944-2-PBS (252028B7). 100 µg. Concentration 1 mg/mL.

Unconjugated rabbit recombinant monoclonal antibody pair in PBS only storage buffer at a concentration of 1 mg/mL, ready for conjugation. Created using Proteintech's proprietary in-house recombinant technology. Recombinant production enables unrivalled batch-to-batch consistency, easy scale-up, and future security of supply.

Matched antibody pairs are designed for use in a variety of assays and platforms that require matched antibody pairs.

Antibody use should be optimized for each application and assay.

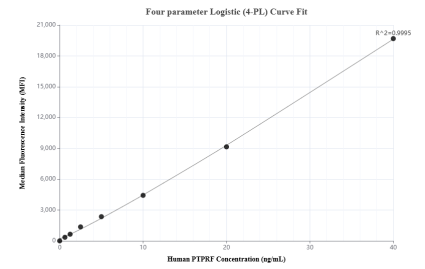
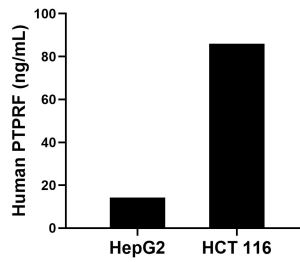
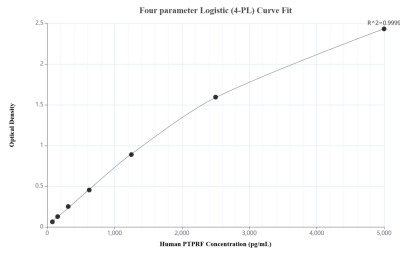
Storage

Storage:
Store at -80°C.

The product is shipped with ice packs. Upon receipt, store it immediately at -80°C

Storage buffer:
PBS only

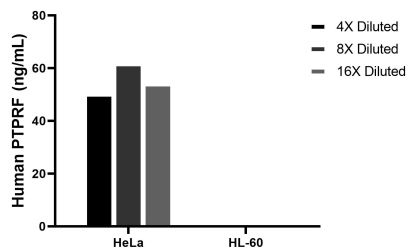
Selected Validation Data



Sandwich ELISA standard curve of MP02791-1, Human PTPRF Recombinant Matched Antibody Pair - PBS only. 86944-1-PBS was coated to a plate as the capture antibody and incubated with serial dilutions of standard Eg6919. 86944-2-PBS was HRP conjugated as the detection antibody. Range: 78.1-5000 pg/mL

The mean PTPRF concentration was determined to be 14.2 ng/mL in HepG2 cell extract based on a 1.2 mg/mL extract load and 85.9 ng/mL in HCT 116 cell extract based on a 1.3 mg/mL extract load.

Cytometric bead array standard curve of MP02791-1, PTPRF Recombinant Matched Antibody Pair, PBS Only. Capture antibody: 86944-1-PBS. Detection antibody: 86944-2-PBS. Standard: Eg6919. Range: 0.625-40 ng/mL



The mean PTPRF concentration was determined to be 55.3 ng/mL in HeLa cell extract based on a 1.2 mg/mL extract load, HL-60 cell extract were served as a negative control.