

For Research Use Only

IGJ Recombinant Matched Antibody Pair, PBS Only



Catalog Number:MP02790-2

Capture Antibody Information

Catalog Number:
86939-6-PBS
Host:
Rabbit
Isotype:
IgG
Purification Method:
Protein A purification

Clone ID:
251691A6
Reactivity:
human
GenBank:
BC038982
Immunogen Catalog Number:
Ag4559

Conjugate:
Unconjugated
Full name:
immunoglobulin J polypeptide, linker protein for immunoglobulin alpha and mu polypeptides
Gene ID:
3512

Detection Antibody Information

Catalog Number:
86939-5-PBS
Host:
Rabbit
Isotype:
IgG
Purification Method:
Protein A purification

Clone ID:
251691C7
Reactivity:
human
GenBank:
BC038982
Immunogen Catalog Number:
Ag4559

Conjugate:
Unconjugated
Full name:
immunoglobulin J polypeptide, linker protein for immunoglobulin alpha and mu polypeptides
Gene ID:
3512

Applications

Tested Applications:
Sandwich ELISA

Range:
0.313-10 ng/mL (Sandwich ELISA)

Recommended Dilutions:
It is recommended that this reagent should be titrated in each testing system to obtain optimal results.

Product Information

MP02790-2 targets IGJ in immunoassays as a matched antibody pair. Validated in Sandwich ELISA.

Capture antibody: IGJ Recombinant monoclonal antibody, PBS Only (Capture) 86939-6-PBS (251691A6). 100 µg. Concentration 1 mg/mL.

Detection antibody: IGJ Recombinant monoclonal antibody, PBS Only (Detector) 86939-5-PBS (251691C7). 100 µg. Concentration 1 mg/mL.

Unconjugated rabbit recombinant monoclonal antibody pair in PBS only storage buffer at a concentration of 1 mg/mL, ready for conjugation. Created using Proteintech's proprietary in-house recombinant technology. Recombinant production enables unrivalled batch-to-batch consistency, easy scale-up, and future security of supply.

Matched antibody pairs are designed for use in a variety of assays and platforms that require matched antibody pairs.

Antibody use should be optimized for each application and assay.

Storage

Storage:
Store at -80°C.
The product is shipped with ice packs. Upon receipt, store it immediately at -80°C
Storage buffer:
PBS only

For technical support and original validation data for this product please contact:

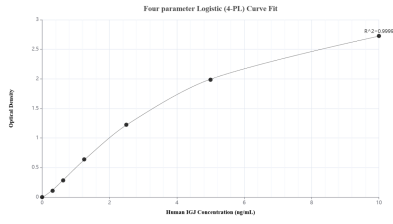
T: 4006900926

E: Proteintech-CN@ptglab.com

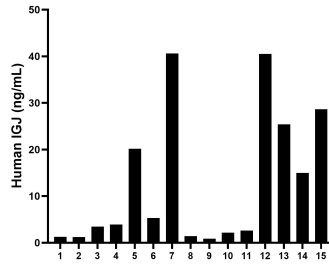
W: ptgcn.com

This product is exclusively available under Proteintech Group brand and is not available to purchase from any other manufacturer.

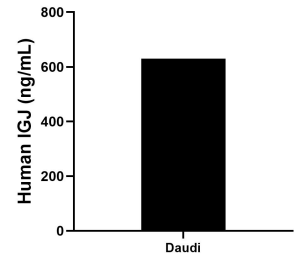
Selected Validation Data



Sandwich ELISA standard curve of MP02790-2, Human IgJ Recombinant Matched Antibody Pair - PBS only. 86939-6-PBS was coated to a plate as the capture antibody and incubated with serial dilutions of standard Ag4559. 86939-5-PBS was HRP conjugated as the detection antibody. Range: 0.313-10 ng/mL.



Serum of fifteen individual healthy human donors was measured. The IGJ concentration of detected samples was determined to be 12.84 ng/mL with a range of 0.85-40.61 ng/mL.



The mean IGJ concentration was determined to be 630.09 ng/mL in Daudi cell extract based on a 1.10 mg/mL extract load.