

For Research Use Only

IGJ Recombinant Matched Antibody Pair, PBS Only



Catalog Number:MP02790-1

Capture Antibody Information

Catalog Number:
86939-3-PBS

Host:
Rabbit

Isotype:
IgG

Purification Method:
Protein A purification

Clone ID:
251691B4

Reactivity:
human

GenBank:
BC038982

Immunogen Catalog Number:
Ag4559

Conjugate:
Unconjugated

Full name:
immunoglobulin J polypeptide, linker protein for immunoglobulin alpha and mu polypeptides

Gene ID:
3512

Detection Antibody Information

Catalog Number:
86939-2-PBS

Host:
Rabbit

Isotype:
IgG

Purification Method:
Protein A purification

Clone ID:
251691A5

Reactivity:
human

GenBank:
BC038982

Immunogen Catalog Number:
Ag4559

Conjugate:
Unconjugated

Full name:
immunoglobulin J polypeptide, linker protein for immunoglobulin alpha and mu polypeptides

Gene ID:
3512

Applications

Tested Applications:
Cytometric bead array

Range:
0.625-80 ng/mL (Cytometric Bead Array)

Recommended Dilutions:
It is recommended that this reagent should be titrated in each testing system to obtain optimal results.

Product Information

MP02790-1 targets IGJ in immunoassays as a matched antibody pair. Validated in Cytometric bead array.

Capture antibody: IGJ Recombinant monoclonal antibody, PBS Only (Capture) 86939-3-PBS (251691B4). 100 µg. Concentration 1 mg/mL.

Detection antibody: IGJ Recombinant monoclonal antibody, PBS Only (Detector) 86939-2-PBS (251691A5). 100 µg. Concentration 1 mg/mL.

Unconjugated rabbit recombinant monoclonal antibody pair in PBS only storage buffer at a concentration of 1 mg/mL, ready for conjugation. Created using Proteintech's proprietary in-house recombinant technology. Recombinant production enables unrivalled batch-to-batch consistency, easy scale-up, and future security of supply.

Matched antibody pairs are designed for use in a variety of assays and platforms that require matched antibody pairs.

Antibody use should be optimized for each application and assay.

Storage

Storage:
Store at -80°C.

The product is shipped with ice packs. Upon receipt, store it immediately at -80°C

Storage buffer:
PBS only

For technical support and original validation data for this product please contact:

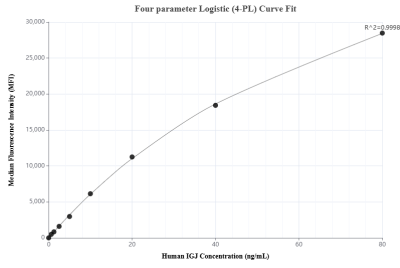
T: 4006900926

E: Proteintech-CN@ptglab.com

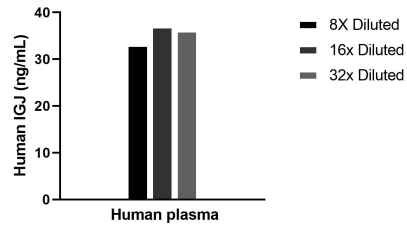
W: ptgcn.com

This product is exclusively available under Proteintech Group brand and is not available to purchase from any other manufacturer.

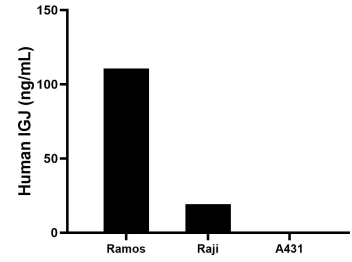
Selected Validation Data



Cytometric bead array standard curve of MP02790-1, IGF Recombinant Matched Antibody Pair, PBS Only. Capture antibody: 86939-3-PBS. Detection antibody: 86939-2-PBS. Standard: Ag4559. Range: 0.625-80 ng/mL



The mean IGF concentration was determined to be 35.4 ng/mL in human plasma.



The mean IGF concentration was determined to be 110.7 ng/mL in Ramos cell extract based on a 1.2 mg/mL extract load, 19.3 ng/mL in Raji cell extract based on a 1.2 mg/mL extract load, A431 cell extract were served as a negative control.