

ASCC2 Recombinant Matched Antibody Pair, PBS Only

Catalog Number: MP02784-1

Capture Antibody Information

Catalog Number:
86086-1-PBS
Host:
Rabbit
Isotype:
IgG
Purification Method:
Protein A purification

Clone ID:
250566D5
Reactivity:
human, mouse, rat
GenBank:
BC025368
Immunogen Catalog Number:
Ag2100

Conjugate:
Unconjugated
Full name:
activating signal cointegrator 1 complex subunit 2
Gene ID:
84164

Detection Antibody Information

Catalog Number:
86086-2-PBS
Host:
Rabbit
Isotype:
IgG
Purification Method:
Protein A purification

Clone ID:
250566B11
Reactivity:
human
GenBank:
BC025368
Immunogen Catalog Number:
Ag2100

Conjugate:
Unconjugated
Full name:
activating signal cointegrator 1 complex subunit 2
Gene ID:
84164

Applications

Tested Applications:
Cytometric bead array

Range:
3.125-200 ng/mL (Cytometric Bead Array)

Recommended Dilutions:
It is recommended that this reagent should be titrated in each testing system to obtain optimal results.

Product Information

MP02784-1 targets ASCC2 in immunoassays as a matched antibody pair. Validated in Cytometric bead array.

Capture antibody: ASCC2 Recombinant monoclonal antibody, PBS Only (Capture) 86086-1-PBS (250566D5). 100 µg. Concentration 1 mg/mL.

Detection antibody: ASCC2 Recombinant monoclonal antibody, PBS Only (Detector) 86086-2-PBS (250566B11). 100 µg. Concentration 1 mg/mL.

Unconjugated rabbit recombinant monoclonal antibody pair in PBS only storage buffer at a concentration of 1 mg/mL, ready for conjugation. Created using Proteintech's proprietary in-house recombinant technology. Recombinant production enables unrivalled batch-to-batch consistency, easy scale-up, and future security of supply.

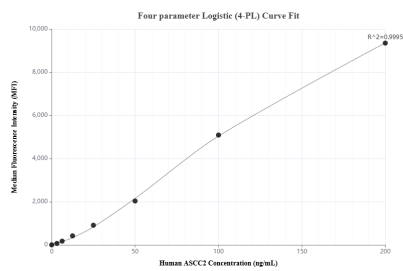
Matched antibody pairs are designed for use in a variety of assays and platforms that require matched antibody pairs.

Antibody use should be optimized for each application and assay.

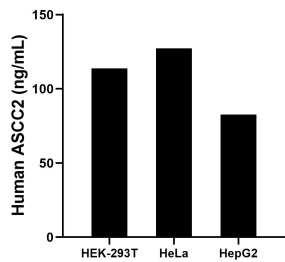
Storage

Storage:
Store at -80°C.
The product is shipped with ice packs. Upon receipt, store it immediately at -80°C
Storage buffer:
PBS only

Selected Validation Data



Cytometric bead array standard curve of MP02784-1, ASCC2 Recombinant Matched Antibody Pair, PBS Only. Capture antibody: 86086-1-PBS. Detection antibody: 86086-2-PBS. Standard: Ag2100. Range: 3.125-200 ng/mL.



The mean ASCC2 concentration was determined to be 113.7 ng/mL in HEK-293T cell extract based on a 1.2 mg/mL extract load, 127.2 ng/mL in HeLa cell extract based on a 1.2 mg/mL extract load, 82.7 ng/mL in HepG2 cell extract based on a 1.2 mg/mL extract load.