

For Research Use Only

# TBR1 Recombinant Matched Antibody Pair, PBS Only



Catalog Number:MP02778-1

## Capture Antibody Information

Catalog Number:  
86772-3-PBS

Host:  
Rabbit

Isotype:  
IgG

Purification Method:  
Protein A purification

Clone ID:  
251434A12

Reactivity:  
human

GenBank:  
BC104844

Immunogen Catalog Number:  
Ag14935

Conjugate:  
Unconjugated

Full name:  
T-box, brain, 1

Gene ID:  
10716

## Detection Antibody Information

Catalog Number:  
86772-2-PBS

Host:  
Rabbit

Isotype:  
IgG

Purification Method:  
Protein A purification

Clone ID:  
251434B4

Reactivity:  
human

GenBank:  
BC104844

Immunogen Catalog Number:  
Ag14935

Conjugate:  
Unconjugated

Full name:  
T-box, brain, 1

Gene ID:  
10716

## Applications

Tested Applications:  
Sandwich ELISA

Range:  
31.3-2000 pg/mL (Sandwich ELISA)

Recommended Dilutions:  
It is recommended that this reagent should be titrated in each testing system to obtain optimal results.

## Product Information

MP02778-1 targets TBR1 in immunoassays as a matched antibody pair. Validated in Sandwich ELISA.

Capture antibody: TBR1 Recombinant monoclonal antibody, PBS Only (Capture) 86772-3-PBS (251434A12). 100 µg. Concentration 1 mg/mL.

Detection antibody: TBR1 Recombinant monoclonal antibody, PBS Only (Detector) 86772-2-PBS (251434B4). 100 µg. Concentration 1 mg/mL.

Unconjugated rabbit recombinant monoclonal antibody pair in PBS only storage buffer at a concentration of 1 mg/mL, ready for conjugation. Created using Proteintech's proprietary in-house recombinant technology. Recombinant production enables unrivalled batch-to-batch consistency, easy scale-up, and future security of supply.

Matched antibody pairs are designed for use in a variety of assays and platforms that require matched antibody pairs.

Antibody use should be optimized for each application and assay.

## Storage

Storage:

Store at -80°C.

The product is shipped with ice packs. Upon receipt, store it immediately at -80°C

Storage buffer:

PBS only

For technical support and original validation data for this product please contact:

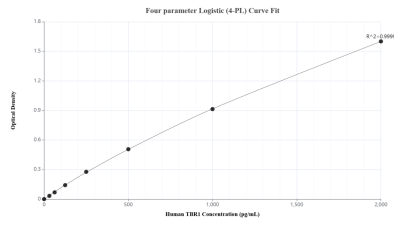
T: 4006900926

E: Proteintech-CN@ptglab.com

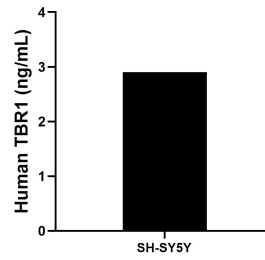
W: ptgcn.com

This product is exclusively available under Proteintech Group brand and is not available to purchase from any other manufacturer.

## Selected Validation Data



Sandwich ELISA standard curve of MP02778-1, Human TBR1 Recombinant Matched Antibody Pair - PBS only. 86772-3-PBS was coated to a plate as the capture antibody and incubated with serial dilutions of standard Ag14935. 86772-2-PBS was HRP conjugated as the detection antibody. Range: 31.3-2000 pg/mL



The mean TBR1 concentration was determined to be 2.9 ng/mL in SH-SY5Y cell extract based on a 1.2 mg/mL extract load.