

# Fibrinogen Alpha Chain Recombinant Matched Antibody Pair, PBS Only

Catalog Number:MP02768-1

## Capture Antibody Information

<b>Catalog Number:</b> 86913-2-PBS	<b>Clone ID:</b> 251931E2	<b>Conjugate:</b> Unconjugated
<b>Host:</b> Rabbit	<b>Reactivity:</b> human	<b>Full name:</b> fibrinogen alpha chain
<b>Isotype:</b> IgG	<b>GenBank:</b> NM_000508.4	<b>Gene ID:</b> 2243
<b>Purification Method:</b> Protein A purification	<b>Immunogen Catalog Number:</b> Eg4643	

## Detection Antibody Information

<b>Catalog Number:</b> 86913-1-PBS	<b>Clone ID:</b> 251931C8	<b>Conjugate:</b> Unconjugated
<b>Host:</b> Rabbit	<b>Reactivity:</b> human	<b>Full name:</b> fibrinogen alpha chain
<b>Isotype:</b> IgG	<b>GenBank:</b> NM_000508.4	<b>Gene ID:</b> 2243
<b>Purification Method:</b> Protein A purification	<b>Immunogen Catalog Number:</b> Eg4643	

## Applications

<b>Tested Applications:</b> Cytometric bead array	<b>Range:</b> 0.625-40 ng/mL (Cytometric Bead Array)	<b>Recommended Dilutions:</b> It is recommended that this reagent should be titrated in each testing system to obtain optimal results.
--	---	---

## Product Information

MP02768-1 targets Fibrinogen Alpha Chain in immunoassays as a matched antibody pair. Validated in Cytometric bead array.

Capture antibody: Fibrinogen alpha chain Recombinant monoclonal antibody, PBS Only (Capture) 86913-2-PBS (251931E2). 100 µg. Concentration 1 mg/ml.

Detection antibody: Fibrinogen alpha chain Recombinant monoclonal antibody, PBS Only (Detector) 86913-1-PBS (251931C8). 100 µg. Concentration 1 mg/ml.

Unconjugated rabbit recombinant monoclonal antibody pair in PBS only storage buffer at a concentration of 1 mg/mL, ready for conjugation. Created using Proteintech's proprietary in-house recombinant technology. Recombinant production enables unrivalled batch-to-batch consistency, easy scale-up, and future security of supply.

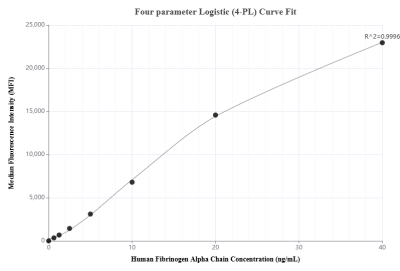
Matched antibody pairs are designed for use in a variety of assays and platforms that require matched antibody pairs.

Antibody use should be optimized for each application and assay.

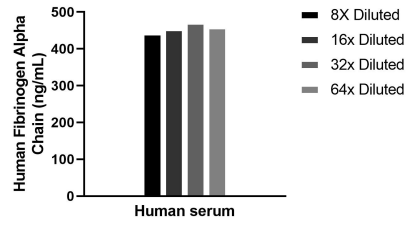
## Storage

**Storage:**  
Store at -80°C.  
**The product is shipped with ice packs. Upon receipt, store it immediately at -80°C**  
**Storage buffer:**  
PBS only

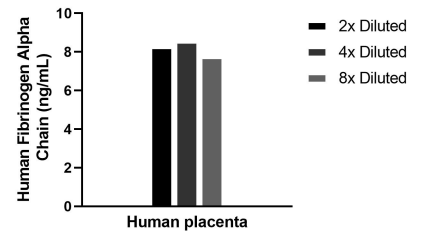
## Selected Validation Data



Cytometric bead array standard curve of MP02768-1, Fibrinogen Alpha Chain Recombinant Matched Antibody Pair, PBS Only. Capture antibody: 86913-2-PBS. Detection antibody: 86913-1-PBS. Standard: Eg4643. Range: 0.625-40 ng/mL



The mean Fibrinogen Alpha Chain concentration was determined to be 455.5 ng/mL in human serum.



The mean Fibrinogen Alpha Chain concentration was determined to be 8.2 ng/mL in Human placenta tissue extract based on a 3.2 mg/mL extract load.