

For Research Use Only

DDX41 Recombinant Matched Antibody Pair, PBS Only



Catalog Number:MP02765-1

Capture Antibody Information

Catalog Number:
86894-1-PBS
Host:
Rabbit
Isotype:
IgG
Purification Method:
Protein A purification

Clone ID:
252011G10
Reactivity:
human, mouse, rat
GenBank:
BC015476
Immunogen Catalog Number:
Ag26593

Conjugate:
Unconjugated
Full name:
DEAD (Asp-Glu-Ala-Asp) box polypeptide 41
Gene ID:
51428

Detection Antibody Information

Catalog Number:
86894-2-PBS
Host:
Rabbit
Isotype:
IgG
Purification Method:
Protein A purification

Clone ID:
252011E1
Reactivity:
human
GenBank:
BC015476
Immunogen Catalog Number:
Ag26593

Conjugate:
Unconjugated
Full name:
DEAD (Asp-Glu-Ala-Asp) box polypeptide 41
Gene ID:
51428

Applications

Tested Applications:
Cytometric bead array

Range:
0.156-20 ng/mL (Cytometric Bead Array)

Recommended Dilutions:
It is recommended that this reagent should be titrated in each testing system to obtain optimal results.

Product Information

MP02765-1 targets DDX41 in immunoassays as a matched antibody pair. Validated in Cytometric bead array.

Capture antibody: DDX41 Recombinant monoclonal antibody, PBS Only (Capture) 86894-1-PBS (252011G10). 100 μ g. Concentration 1 mg/mL.

Detection antibody: DDX41 Recombinant monoclonal antibody, PBS Only (Detector) 86894-2-PBS (252011E1). 100 μ g. Concentration 1 mg/mL.

Unconjugated rabbit recombinant monoclonal antibody pair in PBS only storage buffer at a concentration of 1 mg/mL, ready for conjugation. Created using Proteintech's proprietary in-house recombinant technology. Recombinant production enables unrivalled batch-to-batch consistency, easy scale-up, and future security of supply.

Matched antibody pairs are designed for use in a variety of assays and platforms that require matched antibody pairs.

Antibody use should be optimized for each application and assay.

Storage

Storage:
Store at -80°C.
The product is shipped with ice packs. Upon receipt, store it immediately at -80°C
Storage buffer:
PBS only

For technical support and original validation data for this product please contact:

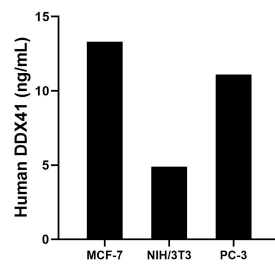
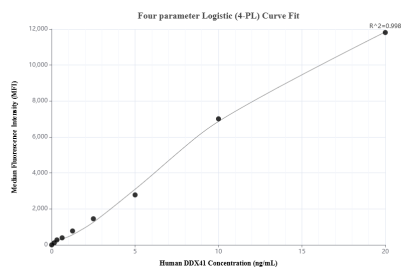
T: 4006900926

E: Proteintech-CN@ptglab.com

W: ptgcn.com

This product is exclusively available under Proteintech Group brand and is not available to purchase from any other manufacturer.

Selected Validation Data



Cytometric bead array standard curve of MP02765-1, DDX41 Recombinant Matched Antibody Pair, PBS Only. Capture antibody: 86894-1-PBS. Detection antibody: 86894-2-PBS. Standard: Ag26593. Range: 0.156-20 ng/mL

The mean DDX41 concentration was determined to be 13.3 ng/mL in MCF-7 cell extract based on a 1.3 mg/mL extract load, 4.9 ng/mL in NIH/3T3 cell extract based on a 1.2 mg/mL extract load, 11.1 ng/mL in PC-3 cell extract based on a 1.2 mg/mL extract load.