

For Research Use Only

CCDC28A Recombinant Matched Antibody Pair, PBS Only



Catalog Number:MP02764-1

Capture Antibody Information

Catalog Number:
86883-2-PBS

Host:
Rabbit

Isotype:
IgG

Purification Method:
Protein A purification

Clone ID:
251922A12

Reactivity:
human

GenBank:
BC000758

Immunogen Catalog Number:
Ag6529

Conjugate:
Unconjugated

Full name:
coiled-coil domain containing 28A

Gene ID:
25901

Detection Antibody Information

Catalog Number:
86883-1-PBS

Host:
Rabbit

Isotype:
IgG

Purification Method:
Protein A purification

Clone ID:
251922E2

Reactivity:
human, mouse, rat

GenBank:
BC000758

Immunogen Catalog Number:
Ag6529

Conjugate:
Unconjugated

Full name:
coiled-coil domain containing 28A

Gene ID:
25901

Applications

Tested Applications:
Cytometric bead array

Range:
0.781-100 ng/mL (Cytometric Bead Array)

Recommended Dilutions:
It is recommended that this reagent should be titrated in each testing system to obtain optimal results.

Product Information

MP02764-1 targets CCDC28A in immunoassays as a matched antibody pair. Validated in Cytometric bead array.

Capture antibody: CCDC28A Recombinant monoclonal antibody, PBS Only (Capture) 86883-2-PBS (251922A12). 100 μ g. Concentration 1 mg/mL.

Detection antibody: CCDC28A Recombinant monoclonal antibody, PBS Only (Detector) 86883-1-PBS (251922E2). 100 μ g. Concentration 1 mg/mL.

Unconjugated rabbit recombinant monoclonal antibody pair in PBS only storage buffer at a concentration of 1 mg/mL, ready for conjugation. Created using Proteintech's proprietary in-house recombinant technology. Recombinant production enables unrivalled batch-to-batch consistency, easy scale-up, and future security of supply.

Matched antibody pairs are designed for use in a variety of assays and platforms that require matched antibody pairs.

Antibody use should be optimized for each application and assay.

Storage

Storage:
Store at -80°C.

The product is shipped with ice packs. Upon receipt, store it immediately at -80°C

Storage buffer:
PBS only

For technical support and original validation data for this product please contact:

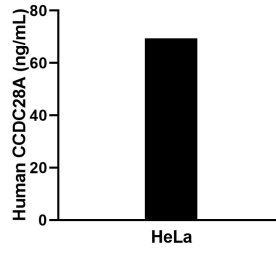
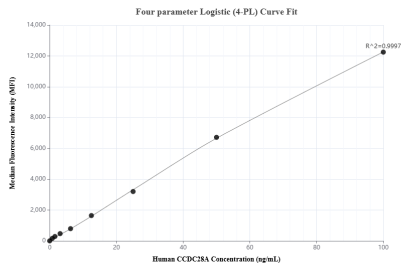
T: 4006900926

E: Proteintech-CN@ptglab.com

W: ptgcn.com

This product is exclusively available under Proteintech Group brand and is not available to purchase from any other manufacturer.

Selected Validation Data



Cytometric bead array standard curve of MP02764-1, CCDC28A Recombinant Matched Antibody Pair, PBS Only. Capture antibody: 86883-2-PBS. Detection antibody: 86883-1-PBS. Standard: Ag6529. Range: 0.781-100 ng/mL.

The mean CCDC28A concentration was determined to be 70.2 ng/mL in HeLa cell extract based on a 1.2 mg/mL extract load.