

SLC27A3 Recombinant Matched Antibody Pair, PBS Only

Catalog Number:MP02758-1

Capture Antibody Information

Catalog Number:
86047-3-PBS
Host:
Rabbit
Isotype:
IgG
Purification Method:
Protein A purification

Clone ID:
250628G3
Reactivity:
human
GenBank:
BC029792
Immunogen Catalog Number:
Ag4015

Conjugate:
Unconjugated
Full name:
solute carrier family 27 (fatty acid transporter), member 3
Gene ID:
11000

Detection Antibody Information

Catalog Number:
86047-2-PBS
Host:
Rabbit
Isotype:
IgG
Purification Method:
Protein A purification

Clone ID:
250628F10
Reactivity:
human
GenBank:
BC029792
Immunogen Catalog Number:
Ag4015

Conjugate:
Unconjugated
Full name:
solute carrier family 27 (fatty acid transporter), member 3
Gene ID:
11000

Applications

Tested Applications:
Cytometric bead array

Range:
0.312-40 ng/mL (Cytometric Bead Array)

Recommended Dilutions:
It is recommended that this reagent should be titrated in each testing system to obtain optimal results.

Product Information

MP02758-1 targets SLC27A3 in immunoassays as a matched antibody pair. Validated in Cytometric bead array.

Capture antibody: SLC27A3 Recombinant monoclonal antibody, PBS Only (Capture) 86047-3-PBS (250628G3). 100 µg. Concentration 1 mg/mL.

Detection antibody: SLC27A3 Recombinant monoclonal antibody, PBS Only (Detector) 86047-2-PBS (250628F10). 100 µg. Concentration 1 mg/mL.

Unconjugated rabbit recombinant monoclonal antibody pair in PBS only storage buffer at a concentration of 1 mg/mL, ready for conjugation. Created using Proteintech's proprietary in-house recombinant technology. Recombinant production enables unrivalled batch-to-batch consistency, easy scale-up, and future security of supply.

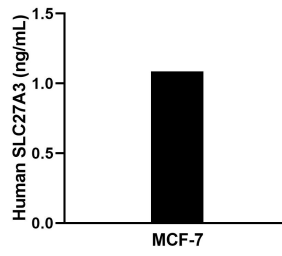
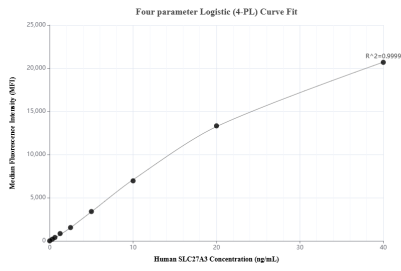
Matched antibody pairs are designed for use in a variety of assays and platforms that require matched antibody pairs.

Antibody use should be optimized for each application and assay.

Storage

Storage:
Store at -80°C.
The product is shipped with ice packs. Upon receipt, store it immediately at -80°C
Storage buffer:
PBS only

Selected Validation Data



Cytometric bead array standard curve of MP02758-1, SLC27A3 Recombinant Matched Antibody Pair, PBS Only. Capture antibody: 86047-3-PBS. Detection antibody: 86047-2-PBS. Standard: Ag4015. Range: 0.312-40 ng/mL.

The mean SLC27A3 concentration was determined to be 1.1 ng/mL in MCF-7 cell extract based on a 1.2 mg/mL extract load.