

Mouse Vitamin D binding protein Recombinant Matched Antibody Pair, PBS Only

Catalog Number:MP02757-1

Capture Antibody Information

Catalog Number: 86884-3-PBS	Clone ID: 251938C4	Conjugate: Unconjugated
Host: Rabbit	Reactivity: mouse	Full name: group specific component
Isotype: IgG	GenBank: NM_008096.2	Gene ID: 14473
Purification Method: Protein A purification	Immunogen Catalog Number: Eg7266	

Detection Antibody Information

Catalog Number: 86884-2-PBS	Clone ID: 251938C3	Conjugate: Unconjugated
Host: Rabbit	Reactivity: mouse	Full name: group specific component
Isotype: IgG	GenBank: NM_008096.2	Gene ID: 14473
Purification Method: Protein A purification	Immunogen Catalog Number: Eg7266	

Applications

Tested Applications: Cytometric bead array, Sandwich ELISA	Range: 0.156-20 ng/mL (Cytometric Bead Array) 78.1-5000 pg/mL (Sandwich ELISA)	Recommended Dilutions: It is recommended that this reagent should be titrated in each testing system to obtain optimal results.
---	--	---

Product Information

MP02757-1 targets Vitamin D binding protein in immunoassays as a matched antibody pair. Validated in Cytometric bead array, Sandwich ELISA.

Capture antibody: Mouse Vitamin D binding protein Recombinant monoclonal antibody, PBS Only (Capture) 86884-3-PBS (251938C4). 100 µg. Concentration 1 mg/mL.

Detection antibody: Mouse Vitamin D binding protein Recombinant monoclonal antibody, PBS Only (Detector) 86884-2-PBS (251938C3). 100 µg. Concentration 1 mg/mL.

Unconjugated rabbit recombinant monoclonal antibody pair in PBS only storage buffer at a concentration of 1 mg/mL, ready for conjugation. Created using Proteintech's proprietary in-house recombinant technology. Recombinant production enables unrivalled batch-to-batch consistency, easy scale-up, and future security of supply.

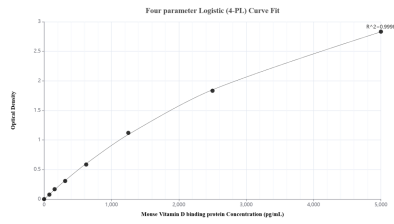
Matched antibody pairs are designed for use in a variety of assays and platforms that require matched antibody pairs.

Antibody use should be optimized for each application and assay.

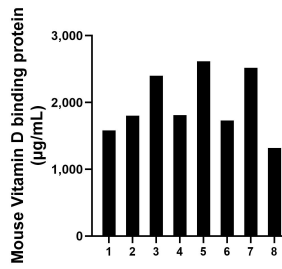
Storage

Storage:
Store at -80°C.
The product is shipped with ice packs. Upon receipt, store it immediately at -80°C
Storage buffer:
PBS only

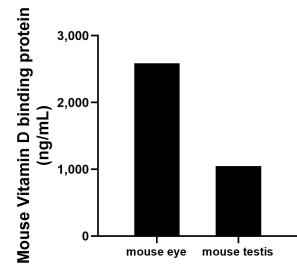
Selected Validation Data



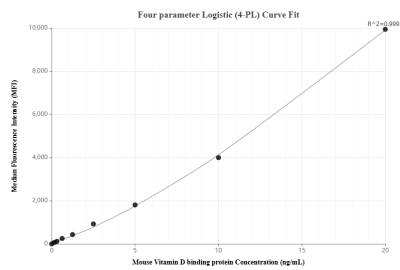
Sandwich ELISA standard curve of MP02757-1, Mouse Vitamin D binding protein Recombinant Matched Antibody Pair - PBS only. 86884-3-PBS was coated to a plate as the capture antibody and incubated with serial dilutions of standard Eg7266. 86884-2-PBS was HRP conjugated as the detection antibody. Range: 78.1-5000 pg/mL



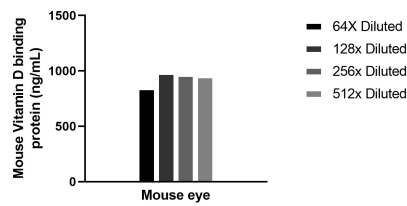
Serum of eight mice was measured. The Vitamin D binding protein concentration of detected samples was determined to be 1,971.9 µg/mL with a range of 1,318.6-2,615.8 µg/mL.



The mean Vitamin D binding protein concentration was determined to be 2,589.1 ng/mL in mouse eye tissue extract based on a 12.4 mg/mL extract load and 1,046.4 ng/mL in mouse testis tissue extract based on a 1.1 mg/mL extract load.



Cytometric bead array standard curve of MP02757-1, MOUSE Vitamin D binding protein Recombinant Matched Antibody Pair, PBS Only. Capture antibody: 86884-3-PBS. Detection antibody: 86884-2-PBS. Standard: Eg7266. Range: 0.156-20 ng/mL.



The mean Vitamin D binding protein concentration was determined to be 932.6 ng/mL in Mouse eye tissue extract based on a 12.4 mg/mL extract load.