

CXCL7/PPBP Recombinant Matched Antibody Pair, PBS Only

Catalog Number: **MP02754-1**

Capture Antibody Information

Catalog Number: 86698-3-PBS	Clone ID: 250712E2	Conjugate: Unconjugated
Host: Rabbit	Reactivity: human	Full name: pro-platelet basic protein (chemokine (C-X-C motif) ligand 7)
Isotype: IgG	GenBank: NM_002704.3	Gene ID: 5473
Purification Method: Protein A purification	Immunogen Catalog Number: Eg3690	

Detection Antibody Information

Catalog Number: 86698-2-PBS	Clone ID: 250712B11	Conjugate: Unconjugated
Host: Rabbit	Reactivity: human	Full name: pro-platelet basic protein (chemokine (C-X-C motif) ligand 7)
Isotype: IgG	GenBank: NM_002704.3	Gene ID: 5473
Purification Method: Protein A purification	Immunogen Catalog Number: Eg3690	

Applications

Tested Applications: Sandwich ELISA	Range: 78.1-5000 pg/mL (Sandwich ELISA)	Recommended Dilutions: It is recommended that this reagent should be titrated in each testing system to obtain optimal results.
---	---	---

Product Information

MP02754-1 targets CXCL7/PPBP in immunoassays as a matched antibody pair. Validated in Sandwich ELISA.

Capture antibody: CXCL7/NAP-2 Recombinant monoclonal antibody, PBS Only (Capture) 86698-3-PBS (250712E2). 100 µg. Concentration 1 mg/mL.

Detection antibody: CXCL7/NAP-2 Recombinant monoclonal antibody, PBS Only (Detector) 86698-2-PBS (250712B11). 100 µg. Concentration 1 mg/mL.

Unconjugated rabbit recombinant monoclonal antibody pair in PBS only storage buffer at a concentration of 1 mg/mL, ready for conjugation. Created using Proteintech's proprietary in-house recombinant technology. Recombinant production enables unrivalled batch-to-batch consistency, easy scale-up, and future security of supply.

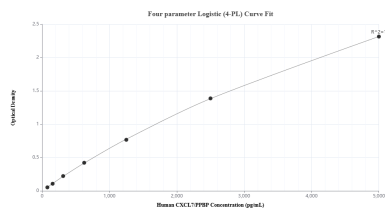
Matched antibody pairs are designed for use in a variety of assays and platforms that require matched antibody pairs.

Antibody use should be optimized for each application and assay.

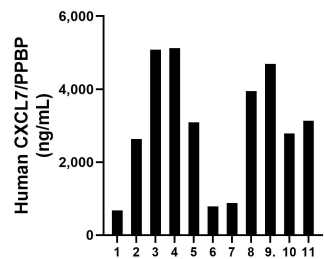
Storage

Storage:
Store at -80°C.
The product is shipped with ice packs. Upon receipt, store it immediately at -80°C
Storage buffer:
PBS only

Selected Validation Data



Sandwich ELISA standard curve of MP02754-1, Human CXCL7/PPBP Recombinant Matched Antibody Pair - PBS only. 86698-3-PBS was coated to a plate as the capture antibody and incubated with serial dilutions of standard Eg3690. 86698-2-PBS was HRP conjugated as the detection antibody. Range: 78.1-5000 pg/mL



Plasma of eleven individual healthy human donors was measured. The human CXCL7/PPBP concentration of detected samples was determined to be 3,322.29 ng/mL with a range of 678.34 - 5,123.18 ng/mL.