

EXO1/Exonuclease 1 Recombinant Matched Antibody Pair, PBS Only

Catalog Number: **MP02742-1**

Capture Antibody Information

Catalog Number:
86445-1-PBS
Host:
Rabbit
Isotype:
IgG
Purification Method:
Protein A purification

Clone ID:
251210D3
Reactivity:
human
GenBank:
BC007491
Immunogen Catalog Number:
Ag9253

Conjugate:
Unconjugated
Full name:
exonuclease 1
Gene ID:
9156

Detection Antibody Information

Catalog Number:
86445-2-PBS
Host:
Rabbit
Isotype:
IgG
Purification Method:
Protein A purification

Clone ID:
251210B2
Reactivity:
human
GenBank:
BC007491
Immunogen Catalog Number:
Ag9253

Conjugate:
Unconjugated
Full name:
exonuclease 1
Gene ID:
9156

Applications

Tested Applications:
Sandwich ELISA

Range:
78.1-5000 pg/mL (Sandwich ELISA)

Recommended Dilutions:
It is recommended that this reagent should be titrated in each testing system to obtain optimal results.

Product Information

MP02742-1 targets EXO1/Exonuclease 1 in immunoassays as a matched antibody pair. Validated in Sandwich ELISA.

Capture antibody: EXO1/Exonuclease 1 Recombinant monoclonal antibody, PBS Only (Capture) 86445-1-PBS (251210D3). 100 μ g. Concentration 1 mg/mL.

Detection antibody: EXO1 Recombinant monoclonal antibody, PBS Only (Detector) 86445-2-PBS (251210B2). 100 μ g. Concentration 1 mg/mL.

Unconjugated rabbit recombinant monoclonal antibody pair in PBS only storage buffer at a concentration of 1 mg/mL, ready for conjugation. Created using Proteintech's proprietary in-house recombinant technology. Recombinant production enables unrivalled batch-to-batch consistency, easy scale-up, and future security of supply.

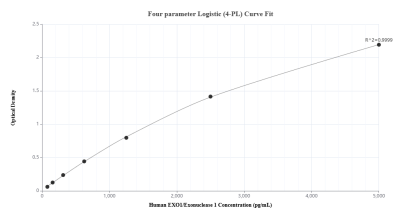
Matched antibody pairs are designed for use in a variety of assays and platforms that require matched antibody pairs.

Antibody use should be optimized for each application and assay.

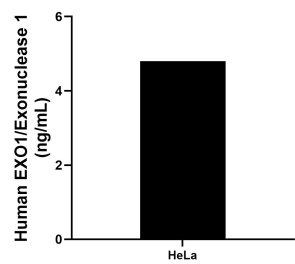
Storage

Storage:
Store at -80°C.
The product is shipped with ice packs. Upon receipt, store it immediately at -80°C
Storage buffer:
PBS only

Selected Validation Data



Sandwich ELISA standard curve of MP02742-1, Human EXO1/Exonuclease 1 Recombinant Matched Antibody Pair - PBS only. 86445-1-PBS was coated to a plate as the capture antibody and incubated with serial dilutions of standard Ag9253. 86445-2-PBS was HRP conjugated as the detection antibody. Range: 78.1-5000 pg/mL



The mean EXO1/Exonuclease 1 concentration was determined to be 4.80 ng/mL in HeLa cell extract based on a 1.2 mg/mL extract load.