

For Research Use Only

POLA2 Recombinant Matched Antibody Pair, PBS Only



Catalog Number:MP02735-2

Capture Antibody Information

Catalog Number:
86856-5-PBS
Host:
Rabbit
Isotype:
IgG
Purification Method:
Protein A purification

Clone ID:
251924C8
Reactivity:
human
GenBank:
BC001347
Immunogen Catalog Number:
Ag0271

Conjugate:
Unconjugated
Full name:
polymerase (DNA directed), alpha 2 (70kD subunit)
Gene ID:
23649

Detection Antibody Information

Catalog Number:
86856-4-PBS
Host:
Rabbit
Isotype:
IgG
Purification Method:
Protein A purification

Clone ID:
251924A9
Reactivity:
human
GenBank:
BC001347
Immunogen Catalog Number:
Ag0271

Conjugate:
Unconjugated
Full name:
polymerase (DNA directed), alpha 2 (70kD subunit)
Gene ID:
23649

Applications

Tested Applications:
Sandwich ELISA

Range:
1.56-50 ng/mL (Sandwich ELISA)

Recommended Dilutions:
It is recommended that this reagent should be titrated in each testing system to obtain optimal results.

Product Information

MP02735-2 targets POLA2 in immunoassays as a matched antibody pair. Validated in Sandwich ELISA.

Capture antibody: POLA2 Recombinant monoclonal antibody, PBS Only (Capture) 86856-5-PBS (251924C8). 100 μ g. Concentration 1 mg/mL.

Detection antibody: POLA2 Recombinant monoclonal antibody, PBS Only (Detector) 86856-4-PBS (251924A9). 100 μ g. Concentration 1 mg/mL.

Unconjugated rabbit recombinant monoclonal antibody pair in PBS only storage buffer at a concentration of 1 mg/mL, ready for conjugation. Created using Proteintech's proprietary in-house recombinant technology. Recombinant production enables unrivalled batch-to-batch consistency, easy scale-up, and future security of supply.

Matched antibody pairs are designed for use in a variety of assays and platforms that require matched antibody pairs.

Antibody use should be optimized for each application and assay.

Storage

Storage:
Store at -80°C.
The product is shipped with ice packs. Upon receipt, store it immediately at -80°C
Storage buffer:
PBS only

For technical support and original validation data for this product please contact:

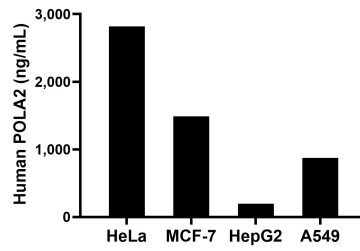
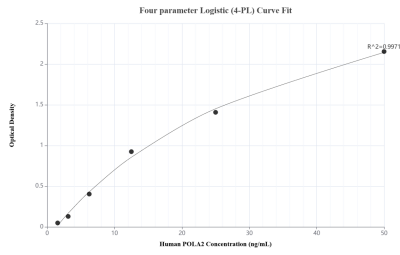
T: 4006900926

E: Proteintech-CN@ptglab.com

W: ptgcn.com

This product is exclusively available under Proteintech Group brand and is not available to purchase from any other manufacturer.

Selected Validation Data



Sandwich ELISA standard curve of MP02735-2, Human POLA2 Recombinant Matched Antibody Pair - PBS only. 86856-5-PBS was coated to a plate as the capture antibody and incubated with serial dilutions of standard Ag0271. 86856-4-PBS was HRP conjugated as the detection antibody. Range: 1.56-50 ng/mL

The mean POLA2 concentration was determined to be 2,818.00 ng/mL in HeLa cell extract based on a 1.20 mg/mL extract load, 1,487.00 ng/mL in MCF-7 cell extract based on a 1.20 mg/mL extract load, 198.00 ng/mL in HepG2 cell extract based on a 1.20 mg/mL extract load and 873.00 ng/mL in A549 cell extract based on a 1.20 mg/mL extract load.