

For Research Use Only

SLC25A24 Recombinant Matched Antibody Pair, PBS Only



Catalog Number:MP02724-1

Capture Antibody Information

Catalog Number:
86635-2-PBS
Host:
Rabbit
Isotype:
IgG
Purification Method:
Protein A purification

Clone ID:
251563E4
Reactivity:
human
GenBank:
BC068561
Immunogen Catalog Number:
Ag6334

Conjugate:
Unconjugated
Full name:
solute carrier family 25 (mitochondrial carrier; phosphate carrier), member 24
Gene ID:
29957

Detection Antibody Information

Catalog Number:
86635-1-PBS
Host:
Rabbit
Isotype:
IgG
Purification Method:
Protein A purification

Clone ID:
251563C10
Reactivity:
human, mouse, rat
GenBank:
BC068561
Immunogen Catalog Number:
Ag6334

Conjugate:
Unconjugated
Full name:
solute carrier family 25 (mitochondrial carrier; phosphate carrier), member 24
Gene ID:
29957

Applications

Tested Applications:
Sandwich ELISA

Range:
6.25-400 ng/mL (Sandwich ELISA)

Recommended Dilutions:
It is recommended that this reagent should be titrated in each testing system to obtain optimal results.

Product Information

MP02724-1 targets SLC25A24 in immunoassays as a matched antibody pair. Validated in Sandwich ELISA.

Capture antibody: SLC25A24 Recombinant monoclonal antibody, PBS Only (Capture) 86635-2-PBS (251563E4). 100 μ g. Concentration 1 mg/mL.

Detection antibody: SLC25A24 Recombinant monoclonal antibody, PBS Only (Detector) 86635-1-PBS (251563C10). 100 μ g. Concentration 1 mg/mL.

Unconjugated rabbit recombinant monoclonal antibody pair in PBS only storage buffer at a concentration of 1 mg/mL, ready for conjugation. Created using Proteintech's proprietary in-house recombinant technology. Recombinant production enables unrivalled batch-to-batch consistency, easy scale-up, and future security of supply.

Matched antibody pairs are designed for use in a variety of assays and platforms that require matched antibody pairs.

Antibody use should be optimized for each application and assay.

Storage

Storage:
Store at -80°C.
The product is shipped with ice packs. Upon receipt, store it immediately at -80°C
Storage buffer:
PBS only

For technical support and original validation data for this product please contact:

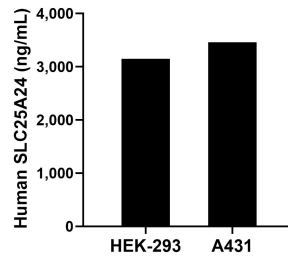
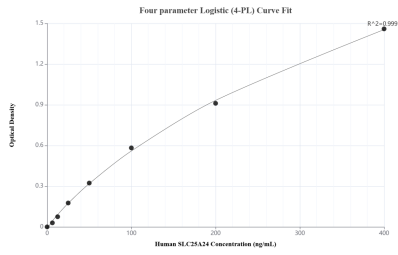
T: 4006900926

E: Proteintech-CN@ptglab.com

W: ptgcn.com

This product is exclusively available under Proteintech Group brand and is not available to purchase from any other manufacturer.

Selected Validation Data



Sandwich ELISA standard curve of MP02724-1, Human SLC25A24 Recombinant Matched Antibody Pair - PBS only. 86635-2-PBS was coated to a plate as the capture antibody and incubated with serial dilutions of standard Ag6334. 86635-1-PBS was HRP conjugated as the detection antibody. Range: 6.25-400 ng/mL.

The mean SLC25A24 concentration was determined to be 3,148.64 ng/mL in HEK-293 cell extract based on a 1.20 mg/mL extract load and 3,459.34 ng/mL in A431 cell extract based on a 1.20 mg/mL extract load.