

# Nucleoside phosphorylase Recombinant Matched Antibody Pair, PBS Only

Catalog Number:MP02719-1

## Capture Antibody Information

Catalog Number:  
86651-2-PBS

Host:  
Rabbit

Isotype:  
IgG

Purification Method:  
Protein A purification

Clone ID:  
251603E8

Reactivity:  
human

GenBank:  
BC106074

Immunogen Catalog Number:  
Ag12507

Conjugate:  
Unconjugated

Full name:  
nucleoside phosphorylase

Gene ID:  
4860

## Detection Antibody Information

Catalog Number:  
86651-1-PBS

Host:  
Rabbit

Isotype:  
IgG

Purification Method:  
Protein A purification

Clone ID:  
251603E11

Reactivity:  
human, mouse, rat

GenBank:  
BC106074

Immunogen Catalog Number:  
Ag12507

Conjugate:  
Unconjugated

Full name:  
nucleoside phosphorylase

Gene ID:  
4860

## Applications

Tested Applications:  
Sandwich ELISA

Range:  
0.313-20 ng/mL (Sandwich ELISA)

Recommended Dilutions:  
It is recommended that this reagent should be titrated in each testing system to obtain optimal results.

## Product Information

MP02719-1 targets Nucleoside phosphorylase in immunoassays as a matched antibody pair. Validated in Sandwich ELISA.

Capture antibody: NP Recombinant monoclonal antibody, PBS Only (Capture) 86651-2-PBS (251603E8). 100 µg. Concentration 1 mg/mL.

Detection antibody: Nucleoside phosphorylase Recombinant monoclonal antibody, PBS Only (Detector) 86651-1-PBS (251603E11). 100 µg. Concentration 1 mg/mL.

Unconjugated rabbit recombinant monoclonal antibody pair in PBS only storage buffer at a concentration of 1 mg/mL, ready for conjugation. Created using Proteintech's proprietary in-house recombinant technology. Recombinant production enables unrivalled batch-to-batch consistency, easy scale-up, and future security of supply.

Matched antibody pairs are designed for use in a variety of assays and platforms that require matched antibody pairs.

Antibody use should be optimized for each application and assay.

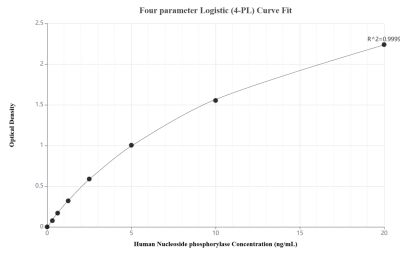
## Storage

Storage:  
Store at -80°C.

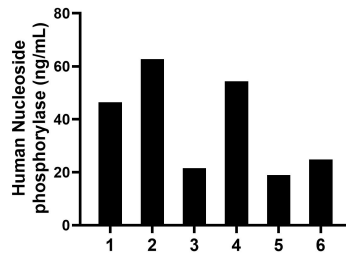
The product is shipped with ice packs. Upon receipt, store it immediately at -80°C

Storage buffer:  
PBS only

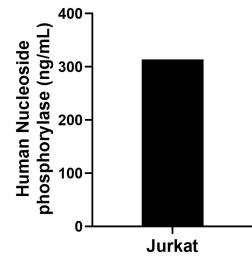
## Selected Validation Data



Sandwich ELISA standard curve of MP02719-1, Human Nucleoside phosphorylase Recombinant Matched Antibody Pair - PBS only. 86651-2-PBS was coated to a plate as the capture antibody and incubated with serial dilutions of standard Ag12507. 86651-1-PBS was HRP conjugated as the detection antibody. Range: 0.313-20 ng/mL



Plasma of six individual healthy human donors was measured. The Nucleoside phosphorylase concentration of detected samples was determined to be 38.13 ng/mL with a range of 18.89-62.76 ng/mL



The mean Nucleoside phosphorylase concentration was determined to be 313.73 ng/mL in Jurkat cell extract based on a 1.20 mg/mL extract load.