

CLEC2/CLEC1B Recombinant Matched Antibody Pair, PBS Only

Catalog Number:MP02704-1

Capture Antibody Information

Catalog Number:
86674-3-PBS
Host:
Rabbit
Isotype:
IgG
Purification Method:
Protein A purification

Clone ID:
251282F10
Reactivity:
human
GenBank:
NM_016509.4
Immunogen Catalog Number:
Eg4774

Conjugate:
Unconjugated
Full name:
C-type lectin domain family 1, member B
Gene ID:
51266

Detection Antibody Information

Catalog Number:
86674-2-PBS
Host:
Rabbit
Isotype:
IgG
Purification Method:
Protein A purification

Clone ID:
251282D12
Reactivity:
human
GenBank:
NM_016509.4
Immunogen Catalog Number:
Eg4774

Conjugate:
Unconjugated
Full name:
C-type lectin domain family 1, member B
Gene ID:
51266

Applications

Tested Applications:
Sandwich ELISA

Range:
15.6-1000 pg/mL (Sandwich ELISA)

Recommended Dilutions:
It is recommended that this reagent should be titrated in each testing system to obtain optimal results.

Product Information

MP02704-1 targets CLEC2/CLEC1B in immunoassays as a matched antibody pair. Validated in Sandwich ELISA.

Capture antibody: CLEC-2/CLEC1B Recombinant monoclonal antibody, PBS Only (Capture) 86674-3-PBS (251282F10). 100 µg. Concentration 1 mg/mL.

Detection antibody: CLEC-2/CLEC1B Recombinant monoclonal antibody, PBS Only (Detector) 86674-2-PBS (251282D12). 100 µg. Concentration 1 mg/mL.

Unconjugated rabbit recombinant monoclonal antibody pair in PBS only storage buffer at a concentration of 1 mg/mL, ready for conjugation. Created using Proteintech's proprietary in-house recombinant technology. Recombinant production enables unrivalled batch-to-batch consistency, easy scale-up, and future security of supply.

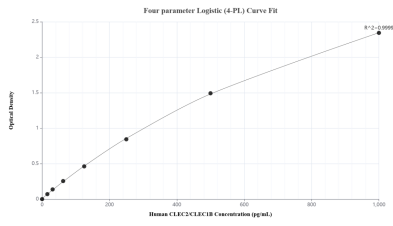
Matched antibody pairs are designed for use in a variety of assays and platforms that require matched antibody pairs.

Antibody use should be optimized for each application and assay.

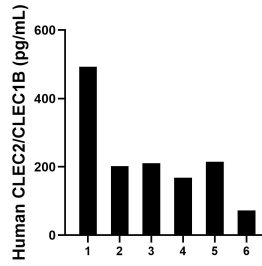
Storage

Storage:
Store at -80°C.
The product is shipped with ice packs. Upon receipt, store it immediately at -80°C
Storage buffer:
PBS only

Selected Validation Data



Sandwich ELISA standard curve of MP02704-1, Human CLEC2/CLEC1B Recombinant Matched Antibody Pair - PBS only. 86674-3-PBS was coated to a plate as the capture antibody and incubated with serial dilutions of standard Eg4774. 86674-2-PBS was HRP conjugated as the detection antibody. Range: 15.6-1000 pg/mL



Plasma of six individual healthy human donors was measured. The CLEC2/CLEC1B concentration of detected samples was determined to be 226.8 pg/mL with a range of 72.6-492.6 pg/mL.