

For Research Use Only

# Total MMP-10 Recombinant Matched Antibody Pair, PBS Only



Catalog Number:MP02702-2

## Capture Antibody Information

**Catalog Number:**  
86845-2-PBS  
**Host:**  
Rabbit  
**Isotype:**  
IgG  
**Purification Method:**  
Protein A purification

**Clone ID:**  
251067G2  
**Reactivity:**  
human  
**GenBank:**  
NM\_002425.3  
**Immunogen Catalog Number:**  
Eg3038

**Conjugate:**  
Unconjugated  
**Full name:**  
matrix metalloproteinase 10 (stromelysin 2)  
**Gene ID:**  
4319

## Detection Antibody Information

**Catalog Number:**  
86845-3-PBS  
**Host:**  
Rabbit  
**Isotype:**  
IgG  
**Purification Method:**  
Protein A purification

**Clone ID:**  
251067G1  
**Reactivity:**  
human  
**GenBank:**  
NM\_002425.3  
**Immunogen Catalog Number:**  
Eg3038

**Conjugate:**  
Unconjugated  
**Full name:**  
matrix metalloproteinase 10 (stromelysin 2)  
**Gene ID:**  
4319

## Applications

**Tested Applications:**  
Sandwich ELISA

**Range:**  
0.156-10 ng/mL (Sandwich ELISA)

**Recommended Dilutions:**  
It is recommended that this reagent should be titrated in each testing system to obtain optimal results.

## Product Information

MP02702-2 targets Total MMP-10 in immunoassays as a matched antibody pair. Validated in Sandwich ELISA.  
Capture antibody: MMP10 Recombinant monoclonal antibody, PBS Only (Capture) 86845-2-PBS (251067G2). 100 µg. Concentration 1 mg/mL.  
Detection antibody: MMP10 Recombinant monoclonal antibody, PBS Only (Detector) 86845-3-PBS (251067G1). 100 µg. Concentration 1 mg/mL.  
Unconjugated rabbit recombinant monoclonal antibody pair in PBS only storage buffer at a concentration of 1 mg/mL, ready for conjugation. Created using Proteintech's proprietary in-house recombinant technology. Recombinant production enables unrivalled batch-to-batch consistency, easy scale-up, and future security of supply.  
Matched antibody pairs are designed for use in a variety of assays and platforms that require matched antibody pairs.  
Antibody use should be optimized for each application and assay.

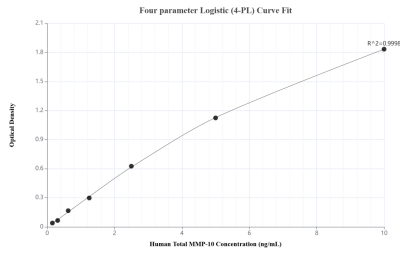
## Storage

**Storage:**  
Store at -80°C.  
**The product is shipped with ice packs. Upon receipt, store it immediately at -80°C**  
**Storage buffer:**  
PBS only

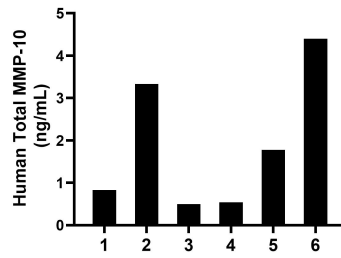
For technical support and original validation data for this product please contact:  
T: 4006900926 E: Proteintech-CN@ptglab.com W: ptgcn.com

This product is exclusively available under Proteintech Group brand and is not available to purchase from any other manufacturer.

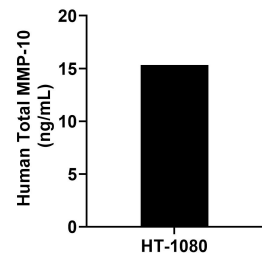
## Selected Validation Data



Sandwich ELISA standard curve of MP02702-2, Human Total MMP-10 Recombinant Matched Antibody Pair - PBS only. 86845-2-PBS was coated to a plate as the capture antibody and incubated with serial dilutions of standard Eg3038. 86845-3-PBS was HRP conjugated as the detection antibody. Range: 0.156-10 ng/mL



Plasma of six individual healthy human donors was measured. The Total MMP-10 concentration of detected samples was determined to be 1.90 ng/mL with a range of 0.50-4.40 ng/mL.



HT-1080 were cultured in DMEM supplemented with 10% fetal bovine serum, 2.5 mM L-glutamine, 100 U/mL penicillin, and 100  $\mu$ g/mL streptomycin sulfate. An aliquot of the cell culture supernate was removed, assayed for human Total MMP-10, and measured 15.32 ng/mL.